

GULF COAST ASSOCIATION OF GEOLOGICAL SOCIETIES

Transactions of the
36th ANNUAL MEETING

BATON ROUGE 1986



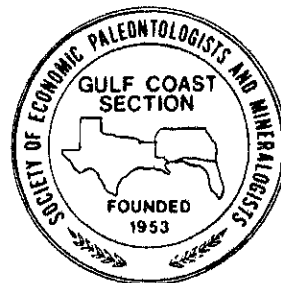
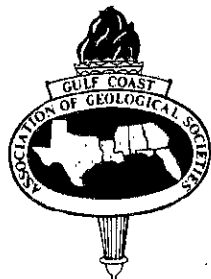
CONTINENTAL SLOPE:

FRONTIER OF THE 80'S

BATON ROUGE, LOUISIANA
OCTOBER 22-24, 1986

TRANSACTIONS GULF COAST ASSOCIATION OF GEOLOGICAL SOCIETIES

A SECTION OF THE AMERICAN ASSOCIATION OF PETROLEUM GEOLOGISTS



VOLUME XXXVI, 1986

DARWIN KNOCHENMUS
GEORGE CARDWELL
FONDA LINDFORS-KEARNS

Editors

PREPARED FOR THE
Thirty-Sixth Annual Meeting of the
Gulf Coast Association of Geological Societies
AAPG REGIONAL MEETING
AND
The Thirty-Third Annual Meeting of the
GULF COAST SECTION OF THE
SOCIETY OF ECONOMIC PALEONTOLOGISTS AND
MINERALOGISTS

THOMAS F. MOSLOW
SEPM Editor

DAVID L. POPE
Associate SEPM Editor

OCTOBER 22-24, 1986

Published at
Baton Rouge, Louisiana

*Copyright 1986 by the Gulf Coast Association of Geological Societies
No reproduction without permission of the President of GCAGS*

TRANSACTIONS VOLUME

Dedicated to



Harold Veral Andersen

The *Transactions* of the Thirty-sixth Annual Meeting is dedicated to Harold Veral Andersen in honor of his outstanding contributions as a teacher and researcher in Gulf Coast geology and paleontology.

Doc Andy was born in 1907 in Cumberland, Iowa; however his family soon moved to Yuma, Colorado and Andy grew up in this small town on the high plains of eastern Colorado. On finishing high school, where he lettered on the Yuma Cornhuskers football team, he enrolled at the University of Denver, utilizing a one-year scholarship. Unfortunately his university training was interrupted by the harsh realities of the Great Depression and, through the late 1920s and 1930s, eking out a livelihood was more important than pursuing scholastics. During those rough years Andy worked in a wide spectrum of employment such as draftsman for a plumbing contractor in Chicago, tippelman in a Utah coal mine, interior decorator, cabinet maker, grocery clerk, and as a field supervisor of a statewide archeological investigation of Alabama. Coincident with this diverse employment he found time to attend the University of Denver, The University of Nebraska, Armor Institute of Technology and the Chicago Institute of Technology. Andy completed his A.B. in Geology at Nebraska in 1940 and immediately embarked on a graduate program. However, his advanced education was once again interrupted when he returned to the Alabama Geological Survey as Director of Technical Studies in Archeological Artifacts. Much of the impetus behind these studies centered around the Tennessee Valley Authority's plans for dams and lakes in northern Alabama and the need to perform site surveys and the removal of all prehistoric artifacts. His thorough analysis of sites along the Tennessee River documented many aspects of the prehistoric "Copena" Indian culture. His exhaustive and thoroughly professional documentation of these archeological sites provided for his nomination and entry to Sigma Xi, the prestigious academic honorary fraternity.

By now "interruption" was the accepted norm in Andy's life, so it wasn't too surprising that World War II sidetracked his primary interest in geology and archeology once again. He enlisted in the Army Corps of Engineers and served during the war at various locations in Europe. By 1946, when he was discharged, he had been promoted to the rank of Captain. On the day of his release from active duty, he drove from Birmingham to Tuscaloosa to explore the possibility of finishing his doctorate at the University of Alabama. In addition to finding no offer there, he was counseled that he should pursue his PhD at one of the larger universities up east. Undaunted, Andy pressed on to Baton Rouge for an interview at LSU, where he was met by the now legendary Harold N. Fisk. Impressed by Andy's record of achievements, Fisk immediately knew he wanted Andersen to enroll in the geology doctorate program; however Andy needed an assistantship. With this requirement exposed, Fisk called in Dr. H. V. Howe and asked Heinie if he could offer Andy an assistantship. Without hesitation Howe agreed. Dr. Howe's authoritative knowledge of foraminifera and ostracodes influenced Andy towards the discipline of micropaleontology, a natural transition from his studies in vertebrate paleontology while at the University of Nebraska.

By 1946 Fisk had completed for the Corps of Engineers the epic-sized study of the alluvial valley of the Mississippi River; however many other geologic aspects of deltaic sedimentation remained to be researched and documented. Doc Andy was fortunate to arrive at LSU at the time when H. N. Fisk, R. J. Russell and H. V. Howe comprised the synergistic troika that so ably led research efforts to understand the

complexities of riverine sedimentation and Gulf Coast stratigraphy. In the fall semester of 1946 Andersen and James P. Morgan initiated a joint study of the Mississippi Delta area with special emphasis on the mudlump islands located at the mouth of the passes for the Corps of Engineers. Analyses of representative samples taken from mudlump localities revealed abundant microfaunal assemblages. The detailed study of these foraminiferal faunas provided the key to the interpretation of the original environment of deposition of the sediment, and the amount of vertical displacement since the time of deposition and the creation of the mudlump islands. Andy's doctoral dissertation developed from this study and it was accepted by the graduate faculty in August 1950. Thus, it took him a quarter century, from 1925 to 1950, to achieve his educational goal. Doc Andy's dissertation and that of his colleague, Jim Morgan, were subsequently modified and published as Louisiana Geological Survey Bulletin No. 35 in September 1961 under the title of "Genesis and Paleontology of the Mississippi River Mudlumps."

Upon receiving his PhD Andy thought he was now prepared to go to work in the petroleum industry, but when he asked Doc Howe for a recommendation, Heinie refused. Howe stated that Andy did not know enough about the geology of the region and that he should remain at the university to teach geology and micropaleontology. It was obvious that Doc Howe realized Andy's potential of becoming an exceptional educator. Before he could settle into his faculty duties his career was again interrupted in 1950. With the outbreak of the Korean Conflict he was recalled to active duty in the Corps of Engineers. When he reported in at Fort Belvoir, the personnel officer, on discovering that Andy had a PhD in geology, stated that he had a "tailor-made" assignment for him. For the next two years he was attached to the Engineers Training Publications Department where he finished compiling and wrote a technical manual on geology. TM5-545, "Geology and Its Military Application," was issued in August 1952 and was used by the Corps of Engineers for years. Also, a prominent West Coast university used this manual in their introductory geology courses for some time.

On resuming his faculty position at LSU, Andy's recent involvement with basic geology renewed his interest in teaching introductory courses in physical and historical geology. For over a twenty year period he taught at least one section each semester. A reasonable estimate would be that over 4,500 freshmen had their introduction to the science of geology under his instruction.

Doc Andy's greatest contribution to Gulf Coast geology and to the petroleum industry has been in his exceptional training of a significant number of the micropaleontologists employed in the Gulf Coast region. Anyone who took Andy's Geology 101 course will immediately recall the prolific "mudlump fauna" that provided specimens for the initial study of morphology and taxonomy. And, who could ever forget those "weird" specimens he would include in his examination slides. Nevertheless, when a student had successfully completed a year of foram micropaleontology under Doc Andy's careful instruction, he or she was well equipped to accept the rigors of oil company paleo work.

Beginning in the early 1950's Andy initiated a summer course for graduate students in field mapping in Sabine Parish. His instruction included all the essential observations needed to make a creditable geologic map in a typical Gulf Coast area. Particular attention to changes in vegetation type, soil characteristics, as well as the fine points of "creek-ology" were stressed. Being in the field with him was a young geologist's high point, as Doc Andy's keen observations were always carefully explained and dutifully noted. His field work and that of his students ultimately culminated in the publication of Louisiana Geological Survey Bulletin No. 34 in 1960. When most of Sabine Parish had been sufficiently mapped, Andy extended his field studies into neighboring Natchitoches. He has continually worked on the surface and subsurface geological aspects of this parish and only last year submitted the final manuscript for publication. Should funding be made available this year "The Geology of Natchitoches Parish" will be published as Louisiana Geological Survey Bulletin No. 44. As a distinction, it will be the first Louisiana Survey Bulletin to be published in the new larger format.

Doc Andy was one of only four American scientists invited to attend the 14th Annual Micropaleontological Colloquium in Bucharest, Rumania in September 1975. This meeting provided the opportunity to visit with Dr. Theodor Neagu of the University of Bucharest who, in the mid-1960s, was a visiting professor of micropaleontology at LSU. Many field excursions were associated with the colloquium and Andy sampled a significant number of European type-locality sections for the LSU museum collection, including outcrops in the Paris Basin originally described by Alcide D'Orbigny in 1826.

Although Andy maintained a heavy teaching schedule in the classroom and in the field, he published more than 20 technical papers. His professional activities include being a charter member of the Gulf Coast Section of SEPM and serving the Section as President in 1962. In recognition of the fact that he trained so many of the economic paleontologists working in the Gulf Coast the Section bestowed Andy with Honorary Membership in 1975.

After a long and distinguished teaching career spanning thirty years on the Geology School faculty, Doc Andersen retired in August 1977. As his retirement date grew near, he requested no "official" function be held in his behalf. After discussions between the Department Chairman and the Executive Council of the LSU Geology Alumni Association, a decision was reached that an appropriate gift would be a new research microscope for his continuing studies of Gulf Coast Tertiary foraminifera. The response by the alumni to the appeal was overwhelming. Not only were funds received for the microscope and accessory lenses, but also a monetary gift could be made as well. Over one hundred fifty former students responded, many sending vignettes of old classroom activities. This was a clear manifestation of the high esteem held by so many ex-students for Doc Andy. The formal presentation was made on March 10, 1978 in the same laboratory where he taught his micropaleontology courses.

Since his retirement from the university in 1977 Doc Andy has been more involved than ever in geologic and paleontologic activities. After spending some time putting the finishing touches on his report of Natchitoches Parish, he hung out his shingle as a consulting geologist and was immediately successful as an exploration consultant. After 30 years of training, even Doc Howe would agree that he was now ready for the oil patch. In between consulting work Andy spends time in his paleontology laboratory working on Tertiary microfossils. In 1983 while trying to collect topotypes of *Quinqueloculina tubercalata* from the Moodys Branch Formation, he noted that the tubercles or knobs, described as being unique to his species, were not unique. This discovery intrigued him so much that he continued his study of related miliolid species. The results of this research unequivocally demand an emendation of the superfamily Miliolacea to accommodate genera with calcareous perforate chamber walls. The results of this research was published in the Tulane Studies in Geology and Paleontology in October, 1984. Following its publication Doc Andy mailed a copy to everyone who contributed to his "retirement" microscope. Presently, he has a second research manuscript at the editors of Tulane Studies. This paper discusses aspects and makes comparisons of Gulf Coastal plain miliolid species with those of selected European localities.

With the foregoing in mind one can accurately state that Doc Andersen is *not* retired but is still contributing to the knowledge and understanding of geology and paleontology. His contribution to the technical program of this meeting attests to this fact.

The Gulf Coast Association of Geological Societies is proud to dedicate this volume of the *Transactions* to Dr. Harold Veral Andersen who has made immeasurable contributions to the knowledge of Gulf Coast geology and paleontology through his research and teaching. Although he has on occasion confided that he never considered himself "worthy" to have been on the geology faculty, the truth is that he is the *most* worthy of all.

Edward B. Picou, Jr.

TITI
DEC
TAE
OFF
REF
OTI
REF
REF
REF
GC.
GC.
BE
BE
CO
PA
HO
HC
OF
RE
GU
BE
HC
HC
PA
GI
PU
KI
S
R
I
S
J

Table of Contents

TITLE PAGE.....	i
DEDICATION TO HAROLD V. ANDERSEN	iii
TABLE OF CONTENTS	v
OFFICERS OF MEMBER SOCIETIES, GCAGS.....	ix
REPORT OF THE PRESIDENT, GCAGS, David E. Pope	xi
OTHER OFFICERS, GCAGS.....	xiii
REPORT OF THE GENERAL CHAIRMAN, Harry L. Roland	xiv
REPORT OF THE EDITORS, Darwin Knochenmus, George Cardwell, Fonda Lindfors-Kearns.....	xiv
REPORT OF THE PROGRAM CHAIRMEN, James M. Coleman and Clyde H. Moore	xiv
GCAGS STANDING COMMITTEES.....	xv
GCAGS OFFICERS AND CONVENTION COMMITTEES	xvi
BEST PAPERS AWARDS, 35th GCAGS, AUSTIN, TEXAS	xviii
BEST PAPER AWARDS AND LEVORSEN MEMORIAL AWARDS, GCAGS.....	xxi
CONSTITUTION AND BY-LAWS, GCAGS	xxiii
PAST OFFICERS AND CONVENTION CHAIRMEN, GCAGS.....	xxv
HONORARY MEMBERS AND DISTINGUISHED SERVICE AWARDS, GCAGS	xxvi
HONORARY MEMBERSHIP, GCAGS to C. L. Sartor and W. L. Fisher.....	xxvii, xxviii
OFFICERS AND CONVENTION COMMITTEE, GULF COAST SECTION SEPM	xxix
REPORT OF THE PRESIDENT, GULF COAST SECTION SEPM, Susan Morris	xxx
GULF COAST SECTION SEPM BEST PAPER AWARDS, AUSTIN MEETING.....	xxxi
BEST PAPER AWARDS GULF COAST SECTION SEPM.....	xxxiii
HONORARY MEMBERSHIP, GULF COAST SECTION TO C. M. Quigley, Jr., and W. P. S. Ventress	xxxiv, xxv
HONORARY MEMBERS, GULF COAST SECTION SEPM	xxxvi
PAST OFFICERS, GULF COAST SECTION SEPM.....	xxxvi
GULF COAST SECTION SEPM BY-LAWS	xxxviii
PUBLICATIONS OF GCAGS AND GULF COAST SECTION SEPM.....	xl
KEYNOTE ADDRESS: DEEPWATER GULF OF MEXICO EXPLORATION GEOLOGY, HYDROCARBONS AND ECONOMICS, By M. C. Forrest.....	xlv

TECHNICAL PAPERS AND ABSTRACTS

GCAGS

SUBSURFACE TEMPERATURE INVESTIGATIONS USING SEISMIC AND BOREHOLE TEMPERATURE DATA, VERMILION AND LAFORCHE PARISHES, LOUISIANA, by A.H.M. Shah Alam and Rex H. Pilger, Jr.	1
REPLACEMENT GEOMETRY AND FABRICS OF THE SMACKOVER (JURASSIC) DOLOMITE, SOUTHERN ALABAMA, by Mary L. Barrett	9
DEPOSITIONAL AND DIAGENETIC HISTORY OF THE HOSSTON FORMATION (TRAVIS PEAK), NEUVO LEON GROUP, TRAWICK FIELD, NACOGDOCHES COUNTY, TEXAS, by Scott B. Blount, Austin A. Sartin and Ernest B. Ledger.....	19
SUBSURFACE STRUCTURE AND HYDROCARBON OCCURRENCE, HEIDELBERG-SAND HILL GRABEN SYSTEM, SOUTHEAST MISSISSIPPI, by J. Keith Bowman and Maurice A. Meylan.....	31
PRODUCTIVE LOWER WILCOX DISTRIBUTARY CHANNEL SANDS OF THE HALLETTSVILLE EMBAYMENT, LAVACA COUNTY, TEXAS, by Stewart Chuber and Harvey H. Howell (Abstract).....	59

GEOLOGIC DEVELOPMENT AND CHARACTERISTICS OF THE CONTINENTAL MARGINS, GULF OF MEXICO, by James M. Coleman, David B. Prior, and Harry H. Roberts	61
THE ENVIRONMENTAL SAFETY OF UNDERGROUND INJECTION OF OILFIELD BRINES IN LOUISIANA, by Robert M. Conger	65
SEISMIC STRATIGRAPHIC FRAMEWORK OF THE LOUISIANA CONTINENTAL MARGIN: CLUES TO HYDROCARBON SOURCING, by Menno G. Dinkleman (Abstract)	71
PETROGRAPHY AND DIAGENESIS OF LOWER CRETACEOUS TRAVIS PEAK (HOSSTON) FORMATION, EAST TEXAS, by Shirley P. Dutton	73
HYDROCARBON EXPLORATION EVALUATION OF THE PULLEY RIDGE AREA, OFFSHORE SOUTH FLORIDA BASIN, by Barry M. Faulkner and Albert V. Applegate	83
PALEOZOIC FRAMEWORK OF THE GULF OF MEXICO, by M. L. Feldman, Sr.	97
DEPOSITION AND DIAGENESIS OF A PETTET RESERVOIR AT LIBSON FIELD, CLAIBORNE PARISH, LOUISIANA, by James P. Ford and Wayne M. Ahr (Abstract)	109
SAND-SHALE IDENTIFICATION BY COMPUTER, by William Frank	111
GROWTH FAULTS AND FAULT-RELATED STRUCTURES OF PROGRADING TERRIGENOUS CLASTIC CONTINENTAL MARGINS, by William E. Galloway	121
THE EFFECTS OF PALEOTOPOGRAPHY AND SUBSTRATE LITHOLOGY ON THE ORIGIN OF WAULSORTIAN REEFS, SOUTH-CENTRAL SACRAMENTO MOUNTAINS, NEW MEXICO, by Peter G. George and Wayne M. Ahr	129
FACIES RELATIONSHIPS AND DEPOSITIONAL ENVIRONMENTS OF LOWER TUSCALOOSA FORMATION RESERVOIR SANDSTONES IN THE McCOMB AND LITTLE CREEK FIELD AREAS, SOUTHWEST MISSISSIPPI, by William S. Hamilton and Christopher P. Cameron (Abstract)	141
REGIONAL VARIATIONS IN PHYSICAL AND CHEMICAL PROPERTIES OF SOUTH LOUISIANA OIL FIELD BRINES, by Jeffery S. Hanor, Janet Bailey, Madelene C. Rogers and L. Riley Milner	143
COMPUTER-AIDED EXPLORATION—A CASE HISTORY, by Leo A. Herrmann	151
REGIONAL STRATIGRAPHY, ENVIRONMENTS OF DEPOSITION, AND TECTONIC FRAMEWORK OF MISSISSIPPIAN CLASTIC ROCKS BETWEEN THE TUSCUMBIA AND BANGOR LIMESTONES IN THE BLACK WARRIOR BASIN OF ALABAMA AND MISSISSIPPI, by David R. Higginbotham	161
DEPOSITIONAL ENVIRONMENTS AND DIAGENESIS OF THE OLIGOCENE VICKSBURG FORMATION IN LYDA AND NORTH RINCON FIELDS, STARR COUNTY, TEXAS, by John Humphrey	171
GULF OF MEXICO DEEPWATER DEVELOPMENT SYSTEMS, by R. Kahn and John M. Bednar	181
DIAGENETIC STUDY OF THE UPPER MEMBER OF THE SMACKOVER FORMATION (UPPER JURASSIC), COLUMBIA COUNTY, ARKANSAS, by Karl K. Kalbacher, and Austin A. Sartin	191
DIAGENESIS OF THE JURASSIC SMACKOVER FORMATION, JAY FIELD, FLORIDA, by Jacqueline M. Lloyd, Paul C. Ragland, Joan M. Ragland, and William C. Parker	201
SHALE-FILLED CHANNEL SYSTEM IN THE WILCOX GROUP (PALEOCENE-EOCENE), NORTH CENTRAL SOUTH LOUISIANA, by Richard P. McCulloh and Lori G. Eversull	213
INTEGRATED GEOLOGICAL, GEOPHYSICAL, AND GEOCHEMICAL INTERPRETATION OF UPPER JURASSIC PETROLEUM TRENDS IN THE EASTERN GULF OF MEXICO, by Ernest A. Mancini, Robert M. Mink, and Bennett L. Bearden	219
ENERGY PROGRAMS—A CONTRIBUTION TO SALT DOME KNOWLEDGE, by Joseph Didier Martinez	227
SEISMIC "NO-DATA ZONE", OFFSHORE MISSISSIPPI DELTA: DEPOSITIONAL CONTROLS ON GEOTECHNICAL PROPERTIES, VELOCITY STRUCTURE, AND SEISMIC ATTENUATION, by Jeffrey A. May, Charles A. Meeder, Anthony R. Tinkle, and Kenneth R. Wener (Abstract)	239
EXPLORATION PETROLOGY OF THE SUNOCO FELDA TREND OF SOUTH FLORIDA, by Hugh Mitchell-Tapping	241
THE FRAMEWORK OF HYDROCARBON GENERATION AND MIGRATION, GULF OF MEXICO CONTINENTAL SLOPE, by Jeffrey A. Nunn and Roger Sassen	257
THE PRODUCTION TRENDS OF THE GULF OF MEXICO: EXPLORATION AND DEVELOPMENT, by J. Rogers Percy and Pulak K. Ray	263

DOLOMITIZATION IN THE SMACKOVER FORMATION, ESCAMBIA COUNTY, ALABAMA, by A. H. Saller, and B. R. Moore	275
GEOLOGIC STUDY AND ENGINEERING REVIEW OF THE JURASSIC SMACKOVER FORMATION OF THOMASVILLE FIELD, RANKIN COUNTY, MISSISSIPPI, by Roger D. Shew, and Mark M. Garner	283
EXPLORATION MODELS FOR SUBMARINE SLOPE SANDSTONES, by Roger M. Slatt	295
LOWER TUSCALOOSA FLUVIAL CHANNEL STYLES AT LIBERTY FIELD, AMITE COUNTY, MISSISSIPPI, by Richard J. Stancliffe, and Emmett R. Adams	305
OLIGOCENE VICKSBURG SANDSTONES OF THE TIJERINA-CANALES-BLUCHER FIELD: A SOUTH TEXAS GEOLOGIC JAMBALAYA, by Dennis A. Taylor, and Zuhair Al-Shaieb	315
DEPOSITION OF A JURASSIC OOID SAND SHOAL—SMACKOVER "A" ZONE OF BUCKNER FORMATION, CORNEY BAYOU FIELD, UNION PARISH, LOUISIANA, by Ellen N. Tye, and Clyde H. Moore	341
COGENETIC RELATION OF ATLANTIC OCEAN AND AMERICAN MEDITERRANEAN, by Dewitt C. Van Sicken	353
CONTROLS ON THE DEPOSITION OF MIXED CARBONATE AND SILICICLASTIC SEDIMENTS ON THE EASTERN SHELF OF THE MIDLAND BASIN, PENNSYLVANIAN OF TEXAS, by Thomas E. Yancey	361

**TECHNICAL PAPERS AND ABSTRACTS
GULF COAST SECTION OF SEPM**

CALCAREOUS NANNOFOSSILS, STATE OF THE ART, GULF OF MEXICO: A REVIEW FOR OIL PROSPECTORS, by William H. Akers	367
AN EVALUATION OF THE SUBSURFACE CATAHOULA FORMATION IN NATCHITOCHES PARISH, LOUISIANA, by Paul E. Albertson, Danny W. Harrelson, and Stephen L. Lee	371
QUATERNARY GEOLOGY OF AVERY ISLAND, LOUISIANA, by Whitney J. Autin, R. P. McCulloh, and A. T. Davison	379
PETROGRAPHY OF THE VOLCANICLASTIC WOODBINE FORMATION, SOUTHWEST ARKANSAS, by J. K. Belk, E. B. Ledger, and M. C. Crocker	391
SLUMPED, DELTA-FRONT RESERVOIR SANDSTONE IN THE EOCENE YEGUA FORMATION, EAST SOUR LAKE FIELD, SOUTHEAST TEXAS, by Robert R. Berg	401
CHARACTERISTICS OF ORGANIC-RICH DEPOSITS OF COASTAL HANCOCK COUNTY, MISSISSIPPI, by Gregory N. Bonn and Franz Froelicher	409
INTRASLOPE BASIN DEPOSITS AND POTENTIAL RELATION TO THE CONTINENTAL SHELF, NORTHERN GULF OF MEXICO, by Arnold H. Bouma and James M. Coleman	419
SEASONAL VARIATIONS IN THE MORPHOLOGY AND SEDIMENTOLOGY OF A POINT BAR ON THE BRAZOS RIVER OF CENTRAL TEXAS, by W. M. Connolly, M. Denham, M. Peterson, C. Ritter, and J. Mazzullo (Abstract)	429
CHRONOSTRATIGRAPHY OF THE CONTINENTAL SLOPE—AN HISTORIC OVERVIEW, by Doris M. Curtis	431
CLAY MINERALOGY OF CUBIT'S GAP CREVASSE-SPLAY, MISSISSIPPI DELTA, by Michael J. DiMarco, Ray E. Ferrell, Jr., and Robert S. Tye	441
CHANGES IN FLORAL COMPOSITION WITH DEPOSITIONAL ENVIRONMENT IN TEXAS JACKSON GROUP LIGNITES, by Judith A. Gennett and Anne L. Raymond	449
ORIGIN OF GASEOUS HYDROCARBONS IN THE SPARTA AQUIFER IN BRAZOS AND BURLESON COUNTIES, TEXAS, by Ethan L. Grossman, Robert W. Hahn, and Steven J. Fritz	457
APALACHICOLA BAY: DYNAMIC SEDIMENTATION IN A GULF COAST ESTUARY, by Wayne C. Isphording	471
SEDIMENTARY FACIES AND SEA-LEVEL CYCLES OF THE UPPER CRETACEOUS MOOREVILLE CHALK, CENTRAL ALABAMA, by David T. King, Jr. and Jerry A. Wylie	489
MODEL FOR FINE-SCALE MOVEMENTS ASSOCIATED WITH CLIMATE AND SEA LEVEL CHANGES ALONG LOUISIANA SHELFBREAK GROWTH FAULTS, by Allen Lowrie	497
FORAMINIFERAL BIOSTRATIGRAPHY AND PALEOECOLOGY OF THE WILCOX GROUP (PALEOCENE—EOCENE) IN CENTRAL AND SOUTHERN LOUISIANA, by Lori L. Nunn	511

ABUNDANCE VARIATIONS OF BENTHIC FORAMINIFERA IN UPPER OLIGOCENE AND MIOCENE STRATA OF SOUTH LOUISIANA, by Lori L. Nunn and Barun K. Sen Gupta	517
FORAMINIFERAL CHARACTERISTICS OF LATE CRETACEOUS AND CENOZOIC BATHYAL LITHOTYPES, by C. Wylie Poag	533
DISTAL SHELF AND UPPER SLOPE SEDIMENTS DEPOSITED DURING RISING SEA LEVEL, NORTH-CENTRAL GULF OF MEXICO, by Harry H. Roberts, Indra B. Singh, and James M. Coleman	541
A REVISION OF THE MIOCENE LITHOSTRATIGRAPHIC NOMENCLATURE, SOUTHWESTERN FLORIDA, by Thomas M. Scott	553
DEPOSITIONAL ENVIRONMENTS AND GRAVEL DISTRIBUTION IN THE PLIO-PLEISTOCENE CITRONELLE FORMATION OF SOUTHEASTERN LOUISIANA, by Robert P. Self	561
STYLES OF INTERDISTIBUTARY BASIN SEDIMENTATION: MISSISSIPPI DELTA PLAIN, LOUISIANA, by Robert S. Tye and Elisabeth C. Kisters	575
APPLICATIONS OF ISOTOPE CHRONOSTRATIGRAPHY IN THE NORTHERN GULF OF MEXICO, by Douglas P. Williams and Dwight Trainor	589
ADVERTISERS	601

OFFICERS OF MEMBER SOCIETIES

GULF COAST ASSOCIATION OF GEOLOGICAL SOCIETIES/ GULF COAST SECTION OF AAPG

ALABAMA GEOLOGICAL SOCIETY, P.O. BOX 6184, University, Alabama 35486

PRESIDENT Thomas J. Carrington
VICE-PRESIDENT Philip E. LaMoreaux
SECRETARY Enid I. Bittner
TREASURER Lawrence J. Rheams

AUSTIN GEOLOGICAL SOCIETY, P.O. Box 1302, Austin, Texas 78767

PRESIDENT W. Douglas Hall
PRESIDENT-ELECT Chester M. Garrett, Jr.
VICE-PRESIDENT Jan Posey
SECRETARY Mary McBride
TREASURER Mary Ambrose

BATON ROUGE GEOLOGICAL SOCIETY, INC, P.O. BOX 19151, University Station, Baton Rouge, Louisiana 70893

PRESIDENT Charles G. Groat
VICE-PRESIDENT Arnold C. Chauviere
SECRETARY Brenda D. David
TREASURER Fonda E. Lindfors-Kearns

CORPUS CHRISTI GEOLOGICAL SOCIETY, P.O. Box 1068, Corpus Christi, Texas 78403

PRESIDENT John G. Drake
PRESIDENT-ELECT Duncan M. Chisholm
VICE-PRESIDENT Thomas B. Henderson, Jr.
SECRETARY Julie S. Moore
TREASURER Patrick A. Nye

EAST TEXAS GEOLOGICAL SOCIETY, P.O. Box 216, Tyler, Texas 75710

PRESIDENT James H. Denney, Jr.
VICE-PRESIDENT Richard W. Griffin
SECRETARY-TREASURER Russell W. Jackson

HOUSTON GEOLOGICAL SOCIETY, 6916 Ashcroft, Houston, Texas 77081

PRESIDENT C. R. (Chuck) Noll, Jr.
PRESIDENT-ELECT Daniel L. Smith
VICE-PRESIDENT Dietmar Schumacher
SECRETARY David A. Engel
TREASURER C. Lynn Williams

LAFAYETTE GEOLOGICAL SOCIETY, Box 51896, Lafayette, Louisiana 70505

PRESIDENT Michael R. McWilliams
FIRST VICE-PRESIDENT David M. Etienne
SECOND VICE-PRESIDENT Philip C. Judice
SECRETARY Paul J. Attwood
TREASURER Michael E. Mathy

MISSISSIPPI GEOLOGICAL SOCIETY, P.O. Box 422, Jackson, Mississippi 39205-0422

PRESIDENT J. R. (Bob) White
FIRST VICE-PRESIDENT Harry V. Spooner, Jr.
SECOND VICE-PRESIDENT Stanley C. Thieling
SECRETARY Stanley King
TREASURER Walter D. Gardner

NEW ORLEANS GEOLOGICAL SOCIETY, P.O. Box 52172, New Orleans, Louisiana 70152-2172

PRESIDENT James A. Hartman
PRESIDENT-ELECT Richard A. Edmund
VICE-PRESIDENT J. (Al) Gilreath
SECRETARY Roy C. Walther
TREASURER Janet E. Bailey

SHREVEPORT GEOLOGICAL SOCIETY, P.O. Box 750, Shreveport, Louisiana 71162

PRESIDENT Gary M. Hanson
FIRST VICE-PRESIDENT Ronald M. Gieger
SECOND VICE-PRESIDENT Rick Turner
SECRETARY James C. Black
TREASURER Gary D. Boland

SOUTH TEXAS GEOLOGICAL SOCIETY, B-100 Petroleum Center, San Antonio, Texas 78209

PRESIDENT John M. Long
VICE-PRESIDENT Geoffrey A. Stone
SECRETARY Donald G. Prior
TREASURER William T. Maloy

SOUTHEASTERN GEOLOGICAL SOCIETY, P.O. Box 1634, Tallahassee, Florida 32302

PRESIDENT Douglas S. Jones
VICE-PRESIDENT Richard A. Davis, Jr.
SECRETARY/TREASURER Richard A. Johnson

REPORT OF THE PRESIDENT GULF COAST ASSOCIATION OF GEOLOGICAL SOCIETIES



David E. Pope

On behalf of the newest kid on the block, the Baton Rouge Geological Society, Welcome to Baton Rouge!

This year we celebrate the thirty-fifth anniversary of GCAGS, whose birthday was May 15, 1951. Our first annual meeting was in New Orleans, November 15-17, 1951. This is our Thirty-sixth Annual Meeting, and the first to be held in the city in which the concept of an association of Gulf Coast geological societies originated, Baton Rouge.

The original seven societies of the Association were: Corpus Christi, East Texas, Houston, Mississippi, New Orleans, Shreveport, and South Louisiana. The latter has since become the Lafayette Geological Society, and we have added the South Texas, Southeastern, Alabama, and Austin societies. We have added and lost Beaumont; and, we have added (1952), lost (1959), and added again Baton Rouge. The present Baton Rouge Geological Society was founded in 1979 and became the twelfth member in 1980, with no further changes in GCAGS to date.

The idea of a Gulf Coast regional meeting is said to have originated in 1946 with the then president of AAPG, Earl B. Noble. Consequently, four such meetings were sponsored by AAPG and hosted by local societies in the fall of 1946, 1947, 1948, and 1949 at Biloxi, San Antonio, Houston, and Biloxi, respectively. Some of our area geologists were not completely happy with the results because of disagreement with the AAPG editorial policies and publication timetable, their more stringent membership requirements, restricted flexibility in convention management policies, and other considerations. Coincidentally, officers of the New Orleans Geological Society (Leslie Bowling, A. P. Claudet, and D. D. Utterback) met with their counterparts of the South Louisiana Geological Society (Philip R. Allin, Francis B. Stein, and W. B. Neal) in Baton Rouge on May 12, 1950 to discuss cooperation between the two societies. An informal meeting of these representatives and Thomas H. Philpott of Shreveport followed, at which the concept of the GCAGS evolved. These gentlemen arrived at the proposal that an association of local geological societies be established in order to generally promote the understanding of Gulf Coast geology and advance petroleum geology, and specifically to sponsor annual regional meetings, with attendant presentation of technical papers, field trips, and publication of the proceedings of these meetings, along with provisions for the desired flexibility. Invitations were extended to all local Gulf Coast societies, and on March 14, 1951 a steering committee met in Houston with the following in attendance: Leslie Bowling, Chairman, New Orleans; E. L. Earl, Houston; William F. Farley, South Louisiana; T. H. Philpott, Shreveport; John Sandidge, South Texas; R. D. Sprague, Mississippi; R. K. Theis, East Texas; and, W. H. Wallace, Jr., Corpus Christi. At this meeting, specific proposals were submitted, discussed and sent back to the local societies for their consideration. On May 15, 1951, essentially the same committee (substitute R. W. Eaton for R. K. Theis of East Texas and delete John Sandidge of South Texas) met and adopted the resolutions previously presented. Hence, the birthday of GCAGS cited in the opening statement above.

But all was not well, not yet. Some societies strongly wanted affiliation with AAPG while others just as strongly did not. Houston temporarily withdrew from GCAGS in protest of nonaffiliation. South Texas delayed joining until 1953, the year after the Association had applied for affiliation. GCAGS petitioned AAPG for affiliation on January 7, 1952, but it was not until July 10, 1967 that AAPG was officially advised that GCAGS has approved an amended resolution and accepted the invitation for affiliation. GCAGS has since been designated as the Gulf Coast Section of AAPG, but also retains its original name. The affiliation has certainly been mutually beneficial, while none of the fears of the early dissenters have materialized. Meanwhile, despite such disagreement on both sides, study and debate, and opinions by lawyers, some progress towards conciliation had been made. In 1959, the GCAGS requested that the AAPG designate the Ninth Annual Convention in Houston as a joint regional meeting with AAPG. This was agreed upon, and the practice has been continued. Now, everyone should be happy!

The GCAGS has performed many good works over the years, thanks to the many geologists who have given so freely of their time and talents. In addition to the *Transactions*, which has become a very widely known and highly respected professional journal, we have a large number of special publications. These are listed in the preliminary pages of this volume, and are available at very reasonable prices. We maintain our inventory, as a service to the profession, so that our publications are always available.

We have also built a reserve of approximately \$500,000, and will make every effort to maintain it at that level so that we can continue to

use the interest for worthwhile projects. For instance, we have progressively increased our financial aid for geologic research to deserving Gulf Coast students from \$5,000 in 1979 to \$21,000 this year, while the number assisted annually has increased from 7 to 21. We have contributed \$15,000 in recent years, in two increments, to the AAPG Tectonic Map of North America project; and, we have also funded a \$10,000 endowment, the interest from which is used for an annual award for best poster at AAPG conventions, in the name of the late Jules Braunstein who initiated these poster sessions. We have awarded \$4,200 for the curation and preservation of the paleontologic and stratigraphic collection of the late E. H. Rainwater. We have contributed \$10,000 this year to the Houston Museum of Natural Science to help retain a very valuable and useful collection of minerals in the Gulf Coast. We continue to lend funds, interest free, to member societies to aid them in worthwhile projects.

The GCAGS performs two basic functions. The first is to plan and stage the annual convention, including publication of the *Transactions*, while the second is to discharge the business affairs of the Association. The former is, of course, done by the General Chairman and the Convention Committees. The latter is done by the Executive Committee, with the advice and assistance of our Standing Committee Chairmen. This combination meets as a body twice annually, once during the annual GCAGS meeting and once at a midyear meeting. They have done their jobs well and are to be highly commended. Many thanks are due to our officers: Vice President Richard H. Sams, Secretary Brenda D. David, Treasurer Fonda E. Lindfors, and Past President E. G. Wermund, Jr. The Standing Committees have also performed well. Lee H. Meltzer has done an outstanding job as Awards and Nominations Chairman for the past three years. He will turn that duty over to Scott J. Lysinger after this annual meeting. Clifford S. Foss will continue in his fine performance for the second year as Finance Chairman. John McCarty, who has done a great job as chairman of the Financial Aid to Students Committee, will relinquish his duties to Allen J. Scott after this meeting. Robert E. Boyer has done yeoman service for several years as our publications chairman. He will continue in that endeavor, and now also serves as our representative on the AAPG Advisory Council, effective July 1, 1986, replacing Paul M. Strunk who has served with distinction in that capacity for the past three years. Edward C. Roy, Jr. will continue as chairman of our Long Range Planning Committee, a job that he is handling extremely well. All of these, and their committee members, are due our profound thanks and everlasting gratitude. Of the Standing Committee chairmen, that leaves only the Historian, who feels more historical than historical at this point, but I am trying to put together the information for a comprehensive history of GCAGS for publication at a future date.

Many thanks are due our General Chairman, Harry L. Roland, Jr., and the Convention Committees who have worked long, hard, and diligently to bring you an outstanding convention. Special thanks go to the Baton Rouge Auxiliary. We couldn't have done it without them. I would also like to thank Jerry Wermund and Ed Garner of Austin, and John Palmer of Shreveport and James M. Forgotson, Jr., formerly of Shreveport, for much valuable advice. We offer our heartiest congratulations to our honorees of this year, and our best paper awards of last year. Congratulations are certainly in order to Jim Forgotson for his election as Vice President of AAPG and his appointment as Director of the Oklahoma University Department of Geology and Geophysics, and to Anthony Riso of Houston for his election as Treasurer of AAPG.

We are very happy to co-sponsor this meeting with the Gulf Coast Section of SEPM, and appreciate the cooperation of President Susan Conger Morris, and those assisting with the SEPM program, editing, and judging. The GCS-SEPM was founded in 1953 and has participated fully in our annual meetings since 1954. It is an autonomous body of some 500 plus individual members from around the Gulf Coast. It should be added that their members usually contribute papers in much higher proportion than their membership numbers, often a majority of the papers published in the *Transactions*. This continued support and participation is certain worthy of our recognition and sincere appreciation.

Even though times are tough in the oil patch, we have tried very hard to bring you an informative and enjoyable meeting. We hope you like it, and we also hope for and expect a brighter tomorrow.

Next year the convention will be in San Antonio. We wish them well and offer any assistance that they may request.

I have greatly enjoyed working with the dedicated geologists on the Executive Committee, the Standing Committees, and the Convention Committees. Thank very much for the opportunity to serve you, and thanks for the memories.

David E. Pope, President 1985-86
Gulf Coast Association of Geological Societies

GULF COAST ASSOCIATION OF GEOLOGICAL SOCIETIES

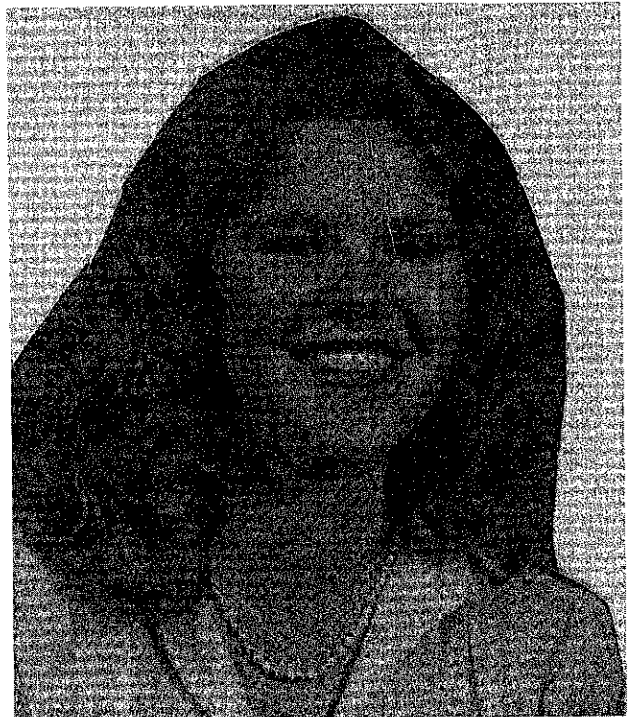
VICE PRESIDENT
Richard H. Sams



SECRETARY
Brenda D. David



TREASURER
Fonda Lindfors-Kearns





Harry L. Roland, Jr.

REPORT OF THE GENERAL CHAIRMAN THIRTY-SIXTH ANNUAL MEETING—1986

On behalf of the Baton Rouge Geological Society and the beautiful city of Baton Rouge, it is my pleasure to welcome you to the thirty-sixth annual meeting of the Gulf Coast Association of Geological Societies.

The many committee chairmen and other volunteers have prepared an excellent technical program for both the GCAGS and SEPM sessions augmented by several excellent field trips.

Many entertainment activities have been planned for your enjoyment, including an icebreaker cocktail party to be held in the exhibit area, a dinner dance featuring a local "Cajun" entertainer, athletic events, a tour of a noted plantation and a boat cruise aboard the riverboat Samuel Clemens.

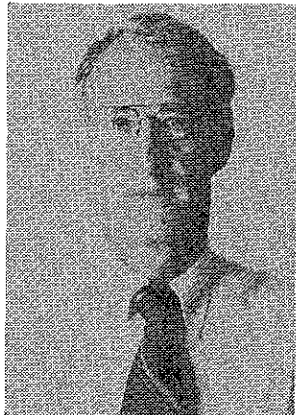
The year 1986 is a bleak year for the oil industry and the registrants of this convention deserve special recognition for their support and participation. In addition, we are indebted to the exhibitors, advertisers, sponsors and donors who supported us during these hard times.

It has been my privilege to serve as General Chairman for the 1986 GCAGS Convention, but the credit must go to members of the Baton Rouge Geological Society, the Ladies' Auxiliary, and the other volunteers who have worked so hard to make this meeting a success.

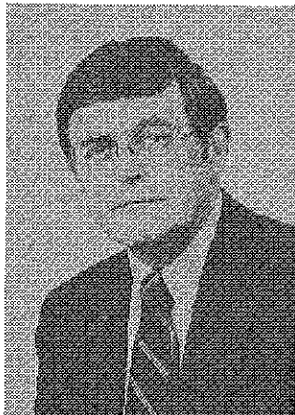
Special credit is extended to Mr. David E. Pope, President of the GCAGS, and Ms. Brenda David, Secretary, for their knowledge and perseverance.

Again, welcome and laissez les bon temps roulez!

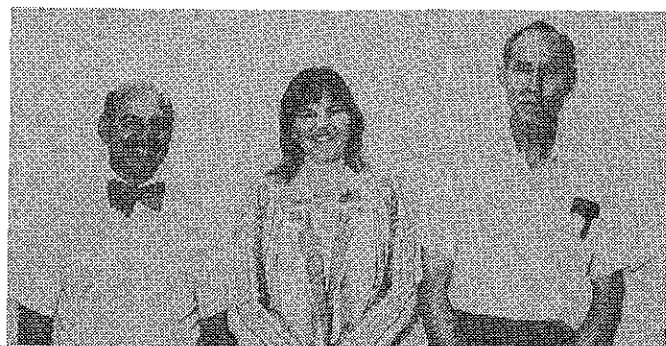
Harry L. Roland, Jr.
1986 General Chairman, GCAGS



James M. Coleman



Clyde H. Moore



REPORT OF THE EDITORS 1986 GULF COAST ASSOCIATION OF GEOLOGICAL SOCIETIES TRANSACTIONS

This year the editors worked as a team of co-editors. All responsibilities were jointly shared and when any one person was busy with their normal duties, the others could carry on with the editorial work. This was very effective in making progress on an enormous job.

The editors wish to commend the authors on the quality of the manuscripts and illustrations. Most papers were well written, had received good technical review, and were accompanied by excellent cartography when received by the editorial staff. Papers like these made the volunteer editors job much easier.

Thirty-eight papers and abstracts were submitted for publication in the GCAGS Section and twenty-three reports for SEPM for a total of sixty-one. The papers describe work in all states along the Gulf Coast from Florida to Texas, including the Continental Shelf and slope, and cover a wide range of topics from engineering concerns in petroleum exploration and production to geochemical processes in diagenesis.

The editorial team was responsible only for the review of the GCAGS papers and we wish to thank Tom Moslow and his staff for their work in reviewing the SEPM papers. Having the SEPM papers processed by another group made the editorial job feasible in the time frame allowed.

Special thanks are given to Brenda David, Secretary, GCAGS, for all of the coordinating assistance in routing manuscripts, obtaining special reports and pictures, and handling the AAPG abstracts and to Liz Ellsworth, USGS, for all of the assistance in calling authors, organizing files, and tracking manuscripts. Without all of this special help from others outside the editorial committee, the editorial task could never have been accomplished. Thanks are also given to Harry Roberts for his concern and coordination between the printer and editors. It was a very congenial relationship and an important factor in making our job easier.

Special mention also goes to the personnel at LSU Graphic Services, particularly Loyd Crane and Woodroe Hodges. It was a pleasure for a team of part-time editors to work with a group of professionals who were so patient and willing to advise us regarding details in preparing the manuscripts for printing.

Darwin Knochenmus Fonda E. Lindfors George T. Cardwell
1986 Transactions Editors

REPORT OF THE TECHNICAL PROGRAM CHAIRMAN, THIRTY-SIXTH MEETING OF THE GULF COAST ASSOCIATION OF GEOLOGICAL SOCIETIES

We dedicate this program to the future of the oil industry. We thank all the authors and are grateful for the support of the local committee. Special thanks go to Elisabeth Kosters for her help in putting the program together.

James M. Coleman and Clyde H. Moore
1986 Program Co-Chairman

GULF COAST ASSOCIATION OF GEOLOGICAL SOCIETIES

STANDING COMMITTEES

ADVISORY (Representative to AAPG Advisory Council)

Robert E. Boyer University of Texas, Austin

AWARDS AND NOMINATIONS

Lee H. Meltzer, Chairman Independent, New Orleans
E. G. Wermund, Jr. Texas Bureau of Economic Geology, Austin
John T. Palmer Palmer Petroleum, Inc., Shreveport
Sarah C. Childress Consultant, Houston
John J. Amoruso Amoruso Petroleum Co., Houston

FINANCE

Clifford S. Foss, Jr., Chairman Cockrell Oil Corp., Houston
William R. Payne Independent, Corpus Christi
Douglas C. Ratcliff Texas Bureau of Economic Geology, Austin

FINANCIAL AID TO STUDENTS

John E. McCarty, Chairman Conoco, Inc., Hobbs, N.M.
Alan J. Scott RPI Texas, Inc., Austin
Danny W. Harrelson U.S. Army Corps of Engineers, Vicksburg

HISTORICAL

David E. Pope Louisiana Geological Survey, Baton Rouge

LONG RANGE PLANNING

Edward C. Roy, Jr., Chairman Trinity University, San Antonio
David E. Pope Louisiana Geological Survey, Baton Rouge
E. G. Wermund, Jr. Texas Bureau of Economic Geology, Austin
John T. Palmer Palmer Petroleum, Inc., Shreveport
Clifford S. Foss, Jr. Cockrell Oil Corp., Houston

PUBLICATIONS

Robert E. Boyer, Chairman University of Texas, Austin
Edward C. Roy, Jr. Trinity University, San Antonio
Raymond W. Stephens, Jr. Independent, New Orleans
E. G. Wermund, Jr. Texas Bureau of Economic Geology, Austin

ORGANIZATION THIRTY-SIXTH ANNUAL MEETING

GCAGS

OFFICERS AND COMMITTEE ASSIGNMENTS

OFFICERS 1986

President -	David E. Pope, La. Geol. Survey
Vice President -	Richard H. Sams, Sams Exploration, Inc.
Secretary -	Brenda D. David, La. Geol. Survey
Treasurer -	Fonda E. Lindfors-Kearns, Quaternary Resource Investigations, Inc.

William G. Haag, La. State Univ., Prof Emeritus
 Joseph D. Martinez, Consulting Geologist and Engineer
 Donald Y. Nugent, La. Dept. of Environmental Quality
 Shea Penland, La. State Univ.
 Harry H. Roberts, La. State Univ., Coastal Studies Institute
 John C. Suter, La. Geol. Survey

CONVENTION COMMITTEES

General Chairman -	Harry L. Roland, La. Geol. Survey
Vice Chairman GCAGS -	Bradford C. Hanson La. Geol. Survey
Vice Chairman SEPM -	Elisabeth C. Kusters, La. Geol. Survey
Advertising -	Lori L. Nunn, Chairman, La. Geol. Survey
Alumni Functions -	Ellen N. Tye, Chairman, Basin Research Inst., La. State Univ.
Arrangements GCAGS -	Lewis G. Nichols, Chairman, Dept. of Geology, La. State Univ. Donald Y. Nugent La. Dept. of Environmental Quality
Arrangements SEPM -	Alvin M. Phillips, Jr., Chairman, Museum of Geoscience, La. State Univ., Zia Tammani, Geraghty & Miller, Inc.
Audio-Visual -	Dale Nyman, Chairman, U.S. Geol. Survey, David A. Early, U.S. Geol. Survey
Editors GCAGS -	Darwin D. Knochenmus, U.S. Geological Survey George T. Cardwell, Cap. Area Ground Water Cons. Comm. Fonda Lindfors-Kearns, Quaternary Resources Investigations, Inc.
Editors SEPM -	Thomas F. Moslow, La. Geol. Survey David L. Pope, La. Geol. Survey
Employment Interviews -	W. D. Millican, Chairman, Ethyl Corp. Harold Bergeron, Ethyl Corp.
Entertainment -	David D. Tettleton, Chairman, Gyro Exploration, Inc. J. Remy Williams, Gyro Exploration, Inc. Bobby L. Jones, La. Office of Mineral Resources
Exhibits -	Richard P. McCulloh, Chairman, La. Geol. Survey Edwin B. Millet, La. Geol. Survey
Field Trips -	Rod E. Emmer, Chairman, Coastal Environments, Inc. Joseph C. Holmes, La. Geol. Survey James M. Coleman, La. State Univ., School of Geoscience

Golf Tournament -

Arnold C. Chauviere, Chairman, Consultant
 Bobby L. Jones, La. Office of Mineral Resources
 Rodney W. Jackson, La. Office of Mineral Resources
 Joseph S. Gauthier, Consultant

Housing -

Joe B. Adams, Chairman, Brade Oil & Gas, Inc.
 William A. Romans, Consultant

Judging and Awards GCAS -

Michael J. Nault, Chairman, Tenneco Oil Co.

Judging and Awards SEPM -

Stephen Truax, III, Chairman, Tenneco Oil Co.

Printing -

Harry H. Roberts, Chairman, Coastal Studies Inst., La. State Univ.
 Ellen N. Tye, La. State Univ. Basin Research Institute

Program Co-Chairmen

- James M. Coleman, Coastal Studies Inst., La. State Univ.
 Clyde H. Moore, Basin Research Inst., La. State Univ.
 Elisabeth C. Kusters, La. Geol. Survey

Publicity -

Louise S. Durham, Chairman, Consultant
 Joseph D. Martinez, Consulting Geologist and Engineer

Reception -

Charles G. Groat, Chairman, La. Geol. Survey

Registration -

George H. Cramer, II, Chairman, La. Dept. of Envir. Quality
 John J. Daggett, La. Dept. of Envir. Quality
 Frances M. Mollere, La. Geol. Survey
 June Dodd, Desk & Derrick Club

Run -

Drukell B. Trahan, Chairman, La. Geol. Survey
 Whitney J. Autin, La. Geol. Survey
 David L. Pope, La. Geol. Survey

Speakers Assistance -

M. B. Kumar, Chairman, DNR, Conservation
 Dale E. Berguist, La. DNR, Conservation
 Rayett DeMond, La. DNR, Conservation
 Michael W. Killeen, La. DNR, Conservation

Spouses Activities -

Pam F. LeBlanc, La. DNR, Conservation
Zia Tammani, Geraghty & Miller, Inc.

Ouida Tettleton, Chairman
Maxine Jones, Co-Chairman
Margaret Fiandt, Co-Chairman
Joyce Nichols, Hospitality suite
Necla Lowe, Plantation tour and lunch
Sue Farrell, Rural Life Museum tour
Paula Paxton, Boat cruise and lunch
Jenny Williams, Decorations

Tennis -

Drukell B. Trahan, Chairman, La. Geol.
Survey

Peggy Rooney, La. Geol. Survey
Don Boniol, La. Geol. Survey
Rowdy Lemoine, Basin Research Inst., La.
State Univ.

Tobin Theater -

Leonard Guilbeau, Chairman, Consultant

Transportation -

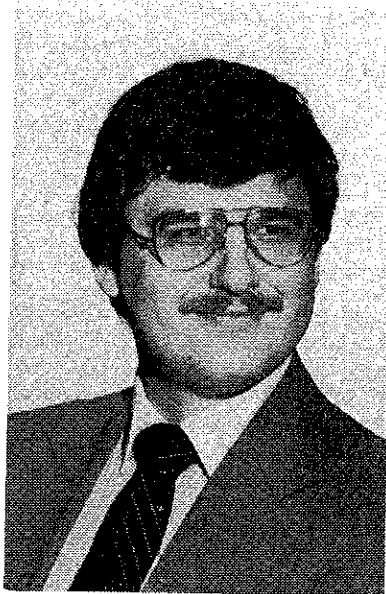
Bill Walter, Chairman, DNR-Conservation
Robert M. Conger, Environmental Man-
agement, Inc.

GULF COAST ASSOCIATION OF GEOLOGICAL SOCIETIES

BEST PAPER AWARDS

THIRTY-FIFTH ANNUAL MEETING

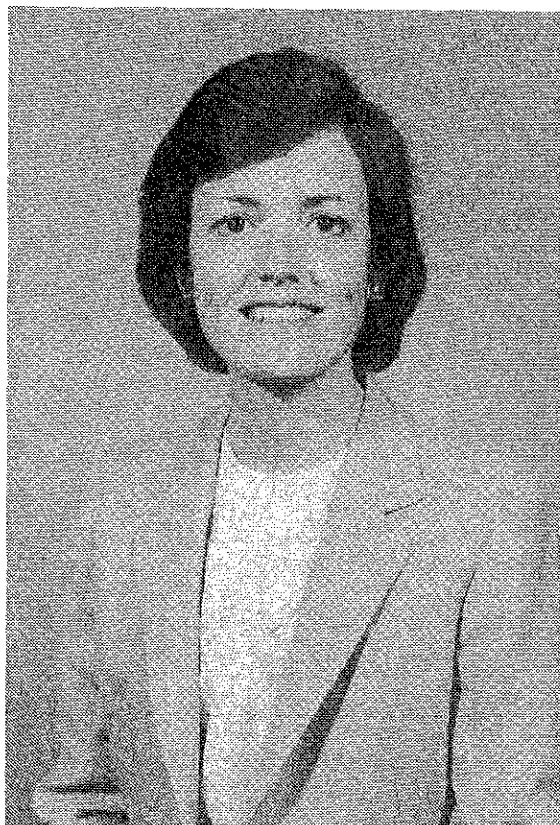
AUSTIN, TEXAS

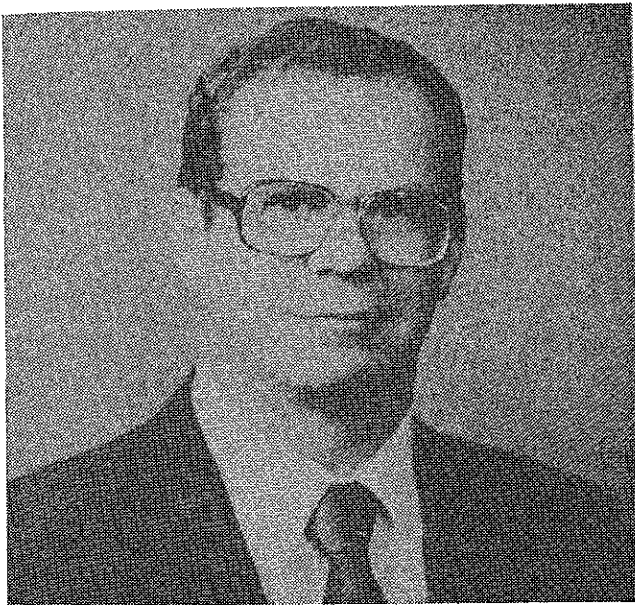


FIRST PLACE was awarded to Mr. Clifford C. Walters and Miss Mary Rose Cassa for their paper entitled "Regional Organic Chemistry of Offshore Louisiana."

Clifford C. Walters received Bachelor degrees in chemistry and biology from Boston University in 1976. He was awarded a Ph.D. in geochemistry from the University of Maryland in 1980, based on geochemical studies of Archean metasediments from Isua, Greenland, that determined whether these rocks, the oldest known sediments, contained evidence of life. After post-doctoral research on carbonaceous chondrites, he joined Gulf Research and Development Company in 1981 and initiated a program to apply biological marker compounds to source rocks and petroleum geochemistry. Two years later, he became part of Sun Exploration and Production Company's Geological Labs, where he is involved in the utilization of geochemistry in the exploration of oil and gas. Their studies of the Gulf of Mexico have been extended to the deep-water slope and onshore provinces.

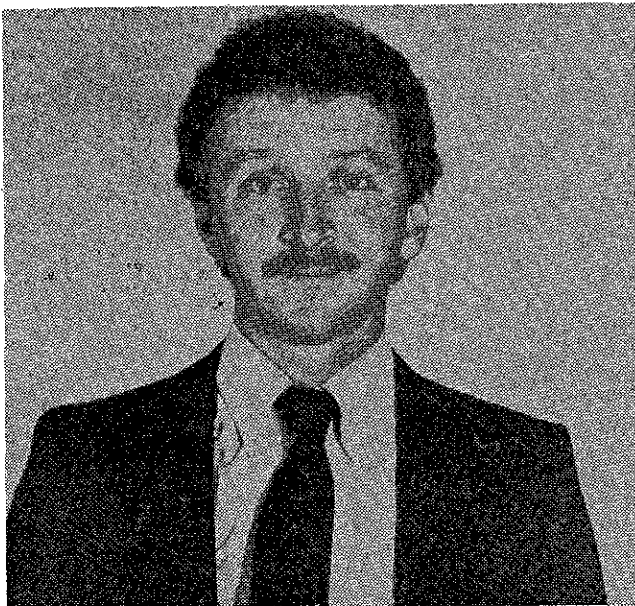
Mary Rose Cassa received a B.S. in geology and German from Dickinson College and an M.A. in geological sciences from the State University of New York at Binghamton. In 1980, she joined Gulf Research and Development Company, where she first worked with organic geochemistry and became interested in the study of source rocks. At Gulf Research and, later, at Gulf Oil Exploration and Production Company, she worked on exploration projects in the Rocky Mountains, Great Basin, Gulf Coast, and West Africa. Ms. Cassa is now an explorationist in the Asia-Pacific Division of Chevron Overseas Petroleum Inc.



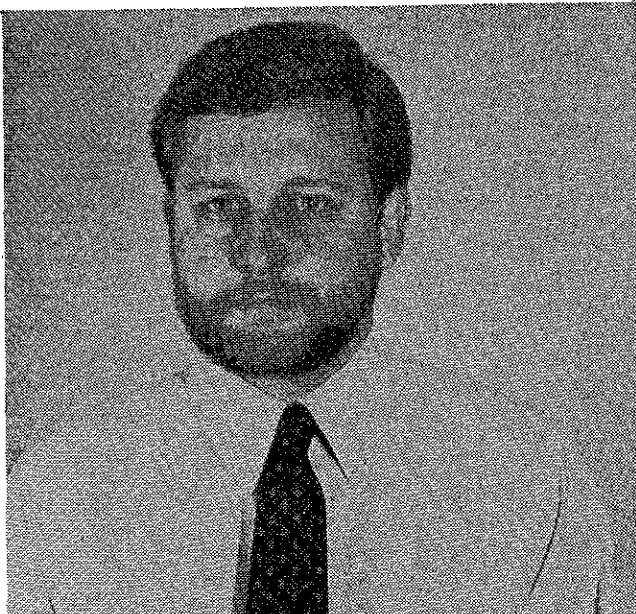


SECOND PLACE was awarded to Mr. Ernest A. Mancini, Mr. Robert M. Mink, and Mr. Bennett L. Bearden for their paper entitled "Upper Jurassic Norphlet Hydrocarbon Potential Along the Regional Peripheral Fault Trend in Mississippi, Alabama, and The Florida Panhandle."

Ernest A. Mancini was educated at Albright College, Reading, Pennsylvania (B.S., Biology, 1969), Southern Illinois University (M.S., Zoology, 1972), and Texas A&M University (Ph.D., Geology, 1974). He was employed as an exploration geologist by Cities Service Company from 1974 to 1976. His work stressed depositional environments and stratigraphy of Cretaceous and Tertiary sediments of the Alaska Peninsula and Bering Sea areas. He joined the faculty of the Department of Geology at the University of Alabama in 1976 and became Professor in 1984. He was appointed State Geologist and Oil & Gas Supervisor for the State of Alabama in 1982. He teaches graduate courses in paleoecology, micropaleontology, petroleum geology, and basin analysis. His publications describe the origin of micromorph faunas: Lower Tertiary, Upper Cretaceous and Upper Jurassic strata of the Gulf Coastal Plain; Upper Cretaceous forearc sedimentation in Alaska; Cenomanian cephalopods of Texas; and the petroleum geology of the Eastern Gulf of Mexico. He is listed in American Men and Women of Science, Who's Who in the Southeast, and Who's Who in Frontier Science and Technology. He is a member of Phi Kappa Phi, Sigma Xi, Phi Sigma, Society of Economic Paleontologists and Mineralogists, American Association of Petroleum Geologists, Alabama Geological Society (Past President), Gulf Coast Section of Society of Economic Paleontologists and Mineralogists (Past President), North America Micropaleontology Society, Paleontological Society, and Cushman Foundation for Foraminiferal Research.



Robert M. Mink is Assistant Oil and Gas Supervisor for the Geophysics and Offshore Division of the State Oil and Gas Board of Alabama. He received his Bachelor of Science degree in Geology and Master of Science degree from The University of Alabama. He was employed as an exploration geologist by Tenneco Oil Company from 1979 to 1982 in Lafayette, Louisiana. His principal area of investigation while at Tenneco was the offshore Mississippi, Alabama, and Florida region. In 1982 he joined the State Oil and Gas Board of Alabama where his duties include supervision and coordination of geological and geophysical research on the petroleum geology of southwestern and offshore Alabama. His publications have emphasized the petroleum geology, exploration, and development of the Eastern Gulf Coastal Plain and the Eastern Gulf of Mexico, with special emphasis on offshore Alabama. Robert Mink is a member of the American Association of Petroleum Geologists and the Alabama Geological Society.

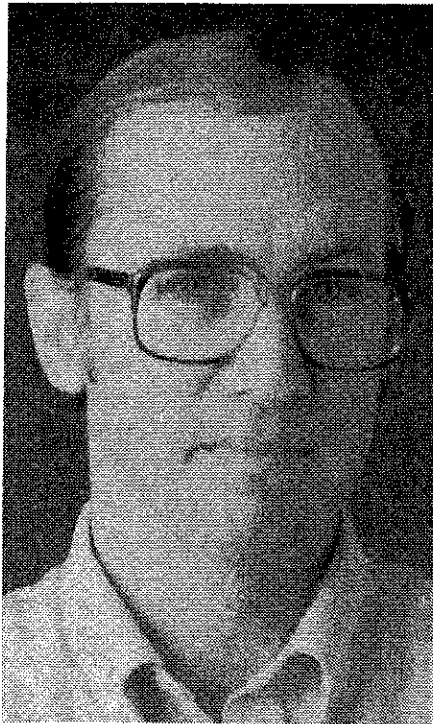


Bennett L. Bearden is a geophysicist and Head of the Geophysics Section of the Geophysics and Offshore Division of the State Oil and Gas Board of Alabama. He received his B.S. degree in Geology and M.S. degree from The University of Alabama. He was employed as an exploration geologist by Don C. Fish and Associates and Belden and Blake Corporation (consultant) from 1981 to 1982 and joined the State Oil and Gas Board of Alabama in the spring of 1982. His research focuses on geophysical mapping of the deep Jurassic strata of offshore Alabama, and he is presently engaged in using seismic reflection data in mapping the Jurassic strata in the Central Gulf of Mexico region. The author of numerous publications, he has been involved in several areas of research including the petroleum geology and geophysics of Paleozoic strata in the Black Warrior Basin of Alabama, and Jurassic strata in southwestern and offshore Alabama. He is a member of the Society of Exploration Geophysicists, the American Geophysical Union, and the American Association of Petroleum Geologists.



THIRD PLACE was awarded to Ms. Audrey L. Workman and Mr. Jeffrey S. Hanor for their paper entitled "Evidence for Large-Scale Vertical Migration of Dissolved Fatty Acids in Louisiana Oil Field Brines: Iberia Field, South Central Louisiana."

Jeffrey S. Hanor received his B.A. degree in Geology, Magna Cum Laude, Honors, from Carleton College in 1961. He was awarded an A.M. and a Ph.D. in Geology from Harvard University in 1964 and 1967. From 1966 to 1970, Hanor was a Research Oceanographer at the Scripps Institution of Oceanography. He has been on the faculty at Louisiana State University since 1970 and has served both as the Chairman of the Department of Geology and Director of the School of Geoscience. His current research interests center around the origin and migration of fluids in sedimentary basins.



Audrey Lynn Workman received her undergraduate degrees in geology and chemistry in 1981 at the University of Tennessee at Chattanooga, where she graduated Magna Cum Laude. She received an M.S. degree in Geology at Louisiana State University in 1985. Ms. Workman currently resides near Chattanooga and plans to become a high school science teacher.



The **A. I. LEVORSEN MEMORIAL AWARD** was presented to Mr. William E. Galloway for his paper entitled "Submarine Canyon System in the Frio Formation of South Texas." William E. Galloway is a native of Waco, Texas. His undergraduate studies were at Texas A&M University (B.S., 1966), followed by graduate studies at the University of Texas at Austin (M.A., 1968; Ph.D., 1971). His professional career began in 1970 as Research Scientist Associate at the Texas Bureau of Economic Geology. From 1970-75 he was, successively, Research Scientist, Research Group Leader, and Director of Geological Research for Continental Oil Co. in Ponca City, Oklahoma. From 1975-1985 he served as a Research Scientist and then Senior Research Scientist at the Texas Bureau of Economic Geology and then as Visiting Professor at the University of Oklahoma and The University of Bergen. Since 1985 he has occupied the chair of Elliott Professor in the Department of Geological Sciences at the University of Texas at Austin. He has been the recipient of the A. I. Levorsen award (1977); EMD Division, AAPS-Best Paper Award (1979); and the Wallace Pratt Memorial Award (1984).

**GULF COAST ASSOCIATION OF GEOLOGICAL SOCIETIES
BEST PAPER AWARDS, AND A. I. LEVORSEN MEMORIAL AWARDS**

	First Award	Second Award	Third Award	Levorsen Award*
1959	J. E. Walters	R. L. Oakes	H. A. Bernard C. F. Major, Jr. B. S. Parrott	
1960	Not awarded			
1961	R. D. Ocamb	D. I. Andrews J. C. Stipe	R. P. Pietz K. R. Scott W. E. Hayes	
1962	D. R. Tucker	R. J. Granberry R. C. Wilshusen	G. C. Glaser (tie)# W. R. Walton (tie)	
1963	E. H. Rainwater	V. Peppard	S. L. Blanton, Jr.	
1964	E. H. Rainwater	D. R. Boyd B. F. Dyer	J. L. Arps	
1965	C. R. Kolb J. R. van Lopik	G. R. Kellough	Not awarded	
1966	B. J. Sloan, Jr	W. R. Paine	R. E. Gernant R. V. Kesling	B. J. Sloan, Jr.
1967	H. Yarborough, Jr	W. A. Price	J. Ewing (tie) J. C. Meyers (tie)	H. Yarborough, Jr.
1968	J. D. Myers	E. H. Rainwater	D. J. Hughes	J. D. Meyers
1969	P. O. Roehl	J. K. Rogers	D. F. McNamee (tie) L. F. Brown (tie)	J. K. Rogers
1970	J. J. Amoruso	R. R. Berg	J. F. Harris	J. J. Amoruso
1971	H. Yarborough, Jr.	D. A. Reel (tie) G. M. Griffin B. J. Sloane (tie) J. A. Hartman (tie)	Not awarded	H. Yarborough, Jr.
1972	R. R. Berg	M. T. Halbouty	J. J. Amoruso	R. R. Berg
1973	R. D. Woods J. W. Addington	R. D. Ottman P. L. Keyes M. A. Ziegler	R. R. Berg R. L. Findley	J. M. Coleman L. D. Wright
1974	D. H. Kupfer	J. M. Coleman L. D. Wright J. N. Schyda T. Whelan	C. A. Parker	D. H. Kupfer
1975	W. L. Seal J. A. Gilreath	J. D. Meyers	B. P. Baganz J. C. Horne J. C. Ferm	J. D. Meyers
1976	J. D. Robinson A. R. Troell	J. W. Becher C. H. Moore	N. Neel	J. D. Robinson A. R. Troell
1977	D. K. Davies W. R. Almon	J. O. Lewis	J. O. Snowden W. B. Simmons E. B. Troughber R. W. Stephens	D. K. Davies W. R. Almon

	First Award	Second Award	Third Award	Levorsen Award*
1978	C. T. Siemers	J. W. Lund J. S. King R. E. Berlitz J. A. Gilreath	E. F. McBride	C. T. Siemers
1979	C. D. Winker	R. R. Berg	C. C. Christina K. G. Martin	R. R. Berg
1980	E. A. Mancini D. J. Benson	F. W. Harrison, Jr.	G. M. Gatenby	E. A. Mancini D. J. Benson
1981	E. C. Roy, Jr. M. Eidelbach N. Trumbly	J. L. Coleman, Jr. C. J. Coleman	G. J. Grabowski, Jr.	E. C. Roy, Jr. M. Eidelbach N. Trumbly
1982	T. E. Ewing S. C. Caran	D. J. Benson E. A. Mancini	R. R. Berg M. F. Habeck	T. S. Ewing S. C. Caran
1983	J. W. Cagle M. A. Khan	W. M. Ahr H. B. Hull, Jr.	T. E. Ewing (tie) C. H. Moore (tie)	J. W. Cagle M. A. Khan
1984	G. Kinsland	S. K. Stewart	C. L. Sartor S. R. Howard	G. Kinsland
1985	C. C. Walter M. R. Cassa	E. A. Mancini R. M. Mink B. L. Bearden	A. L. Workman J. S. Hanor	W. E. Galloway

*—This award is given by the AAPG to the paper that best exemplifies creative ideas in oil and gas exploration (first award, 1966).
#—Glaser and Walton received First Place in the Paleontology Division for their 1962 paper.

CONSTITUTION AND BY-LAWS

GULF COAST ASSOCIATION OF GEOLOGICAL SOCIETIES

CONSTITUTION

ARTICLE I—Name

This is a non-profit organization and shall be known as the "Gulf Coast Association of Geological Societies." It is hereinafter referred to as "This Association."

ARTICLE II—Object

The object of This Association is to provide for discussion and publication of papers on subjects and problems coming within the scope of the Geological profession and with particular emphasis on Gulf Coast geology.

ARTICLE III—Organization

This Association is an organization of AAPG-affiliated Geological Societies in the Gulf Coast area.

Section 1.

The business of This Association shall be transacted by an Executive Committee composed of one representative from each member society and the President, Vice-President, Secretary, Treasurer, and Past President. The Vice-President, Secretary, and Treasurer shall be elected by the Executive Committee at the annual meeting. The Secretary and Treasurer shall be non-voting members of the Executive Committee. The Secretary and Treasurer shall be nominated by the Executive Committee of the local Geological Society next in line to host the annual meeting. The Vice-President shall be nominated by the Executive Committee of the host society for the annual meeting two years hence and shall accede to the Presidency. Thus each year the President, Secretary and Treasurer will be from the host society with the Vice-President providing continuity with the Executive Committee as he assumes the Presidency in the ensuing year. The duties of these officers shall be those customary to their respective offices.

The GCAGS representative to the Advisory Council of American Association of Petroleum Geologists shall be selected by the Executive Committee of GCAGS and shall be an ex officio, non-voting member of the GCAGS Executive Committee.

Each member society shall designate a representative to the Executive Committee and in the event the chosen representative cannot attend any given Executive Committee meeting, an alternate representative shall be appointed by the member society to attend and vote in the absence of the representative. The representative, when practicable, shall be an officer or past officer of the society he represents.

Each society shall have one vote on actions taken by the Executive Committee with the exception that the host society, the next annual host society and the immediate past host society will be entitled to two votes by virtue of their members holding the offices of President, Vice-President and Past President.

The officers of the Executive Committee shall be elected for a term of one year. They shall be elected and assume their duties as soon after the annual meeting of This Association as is practicable. Any vacancies shall be filled by the Executive Committee as provided above in Paragraph 1.

Section 2.

The business of This Association shall be conducted by the Executive Committee. A simple majority vote of the members present at meetings is required to effect decisions, except in those matters which require a greater majority, as set forth in the Constitution and Bylaws.

A quorum shall consist of more than one-half of the voting members of the Executive Committee.

ARTICLE IV—Meetings

There shall be an annual meeting of This Association, the time and place of which shall be determined by the Executive Committee.

ARTICLE V—Publications

There shall be an annual *Transactions* published by This Association, which shall contain papers presented at the annual meeting, and such other material as selected by the Executive Committee. The Executive Committee is authorized to have published additional bulletins, and other material which they feel will further the object of This Association.

ARTICLE VI—Funds

The funds of This Association shall be deposited in any national bank or Federally insured Savings and Loan Association selected by the Finance Committee, to the credit of This Association, or invested in U.S. Government Bonds at the discretion of the Finance Committee.

ARTICLE VII—Amendments

Amendments to this Constitution may be proposed by the Executive Committee, or by any two member societies. Proposed amendments shall be submitted to each of the member societies in writing. It shall require an affirmative vote of three-fourths of the member societies to ratify an amendment to this Constitution.

ARTICLE VIII—Later Affiliation

Non-member Geological Societies in the Gulf Coast Area which are affiliated with AAPG may petition the Executive Committee for membership and shall be accepted by an affirmative vote of three-fourths of the Executive Committee.

AMENDMENT I

Any member society may resign from This Association at any time by written notice to the Executive Committee. There shall be no obligation to transfer to such resigning society any portion of This Association's funds.

AMENDMENT II

This Association shall terminate at such time as a majority of the member societies shall so vote. Upon dissolution all funds and other property shall be divided equally among the member societies.

BYLAWS

I. COMMITTEES

The President, with the approval of the Executive Committee, shall appoint the Annual Meeting Chairman, and the following permanent committees:

- A. Publications
- B. Advertising
- C. Publicity

Appointment to these committees shall be for a term of one year.

1. Annual Meeting Chairman

The Annual Meeting Chairman shall direct the staging of the annual meeting, and shall have the authority to appoint such additional committees as he deems necessary.

2. Publications

The Publications Committee shall be responsible for obtaining papers for presentation at the annual meeting, and editing and publishing the annual *Transactions*. It shall endeavor to stimulate geologists in the Gulf Coast to prepare papers which can be collected and published in the *Transactions*, symposium or other form in order to further the object of This Association as set forth in Article II of the Constitution. This committee shall be composed of one member from each of the affiliated societies.

3. Advertising

The Advertising Committee shall be responsible for obtaining advertisements in the publications of This Association, as directed by the Executive Committee. This committee shall be composed of one member from each of the member societies.

4. Publicity

The Publicity Committee shall be responsible for obtaining maximum national and local publicity of the activities of This Association. Also it shall be the responsibility of this committee to stimulate interest and participation in association affairs. The Executive Committee shall function as the Publicity Committee.

The President, with the approval of the Executive Committee, may appoint such additional committees as are necessary to conduct the business of This Association.

II. TREASURER

The Treasurer shall have the authority to issue checks against the Annual Meeting bank account of This Associa-

tion on his sole signature, but in the event of his absence or incapacity to act, withdrawals or payments by checks may be made on the signature of the President during the continuance of the absence, or incapacity, of the Treasurer. In this event, the identity and authority of the President, and the circumstances relating to the absence or incapacity of the Treasurer shall be certified by the Executive Committee, if so required by the depository. The Treasurer shall submit a financial report on the Annual Meeting at each meeting of the Executive Committee and shall keep a set of books in accordance with good accounting practices. He shall submit the books of the Annual Meeting to the Finance Committee by March 1st following the Annual Meeting. The office of Treasurer shall be bonded as directed by the Executive Committee.

III. FINANCE COMMITTEE

The Finance Committee shall be responsible for investing and managing the funds of the Association. They shall be responsible for advancing to the Treasurer the necessary funds for operating the Annual Meeting and shall disburse funds for expenses and projects not related to the Annual Meeting as directed by the President upon approval by the Executive Committee. The Committee shall have authority to invest the funds as outlined in Article VI. They shall prepare a financial report on the Association's funds and submit it at each meeting of the Executive Committee. They shall also keep an inventory and storage of publications and equipment owned by the Association. They will keep a set of books in accordance with good accounting practices and will submit the books for auditing as requested by the Executive Committee. The Committee will oversee the preparation and submittal of the Association's Annual Income Tax Return. The Committee will also keep a file of these financial reports, as well as the report of the Treasurer for each Annual Meeting, for access by officers and representatives of the annual meetings for future years. The Committee shall consist of three members serving staggered three-year terms, such that each year one member will complete his term and a new member will be appointed in his place. The President of the Association, with the approval of the Executive Committee, shall appoint the members of the Finance Committee and they shall elect their own Chairman. Members of the Finance Committee shall be bonded as directed by the Executive Committee.

IV. These Bylaws may be amended by an affirmative vote of three-fourths of the Executive Committee.

V. There shall be no dues.

GULF COAST ASSOCIATION OF GEOLOGICAL SOCIETIES PAST OFFICERS AND CONVENTION CHAIRMEN

	HOST CITY	PRESIDENT	VICE-PRESIDENT	SECRETARY	TREASURER	CONVENTION CHAIRMAN
1951	New Orleans	L. Bowling	T. H. Philpott	J. S. Spencer	E. M. Baysinger	W. J. Nugent
1952	Corpus Christi	W. M. Chaddick, Jr.	W. A. Gorman	W. A. Peterson	T. D. Barber	
1953	Shreveport	R. T. Wade	D. D. Utterback	F. H. Webster	K. Carter	R. D. Sprague
1954	Houston	W. R. Canada	W. H. Knight	C. W. Holcomb	E. W. Kimball	G. J. Joyce
1955	Biloxi	A. E. Blanton	L. D. Traupe	R. A. Davis	A. F. Scott	T. H. Philpott
1956	San Antonio	R. L. Layden	M. W. Beckman	E. T. Musselman	K. C. Anderson	R. C. Wilshusen
1957	New Orleans	H. N. Hickey	P. Montgomery	J. F. Moss	W. H. Wallace, Jr.	O. G. Bell
1958	Corpus Christi	E. A. Lohse	R. W. Grayson	W. W. Woolfolk	J. A. Wheeler	A. E. Blanton
1959	Houston	G. C. Hardin, Jr.	L. Harvey	A. W. Wood	B. G. Jeffreys	L. L. Palmer
1960	Biloxi	M. F. Kirby	D. N. Osburn	H. O. Woodbury	E. L. Ames	L. H. Meltzer
1961	San Antonio	D. Dassow	E. P. Roth	W. E. Bancroft	R. E. Rogers	H. J. Tyler
1962	New Orleans	T. H. Philpott	J. C. Byrd	R. W. Luker	D. A. Pedrotti	B. F. Dryer
1963	Shreveport	J. C. Byrd	E. Knott	K. C. Harkins, Jr.	J. L. George, Jr.	E. A. Lohse
1964	Corpus Christi	K. Knott	R. E. Fairchild	W. A. Robbins, Jr.	J. S. Schoelen	R. R. Copeland
1965	Houston	R. E. Fairchild	A. M. Borland	M. L. Frazier, Sr.	L. C. Bryant	M. O. Turner
1966	Lafayette	A. M. Borland	J. H. Hensley	L. G. Hughes	E. D. Minihan	L. E. Warren
1967	San Antonio	W. L. Stapp	M. D. Horton	J. W. Yon, Jr.	C. W. Hendry, Jr.	H. S. Puri
1968	Jackson	M. D. Horton	R. O. Vernon	C. E. Brown	B. C. Tucker	J. O. Goffe
1969	Miami	R. O. Vernon	H. J. Tyler	M. L. Dwight	P. G. Gray	R. G. Williamson
1970	Shreveport	H. J. Tyler	L. H. Meltzer	M. H. Oakes	J. E. Melton	J. M. Sides
1971	New Orleans	L. H. Meltzer	D. R. Boyd	M. E. Hole, Jr.	P. W. Cawthon, Jr.	C. E. Harrison
1972	Corpus Christi	D. R. Boyd	F. M. Schall, Jr.	T. J. Eby, Jr.	J. L. Bellamy	F. W. Harrison, Jr.
1973	Houston	F. M. Schall, Jr.	S. J. Lysinger	W. E. Taylor	H. L. Ladner	C. H. Williams, Jr.
1974	Lafayette	S. J. Lysinger	W. H. Moore	J. T. Palmer	C. E. Brown	L. E. Jordan
1975	Jackson	W. H. Moore	C. L. Sartor	A. E. Bell	F. L. Osborne, Jr.	E. G. Wermund, Jr.
1976	Shreveport	C. L. Sartor	R. E. Boyer	R. M. Swords	C. J. Corona	Jules Braunstein
1977	Austin	R. E. Boyer	P. G. Gray	S. L. Perkins	L. C. Bryant	George His
1978	New Orleans	R. W. Stephens	E. C. Roy, Jr.	J. W. Shirley	R. A. Anderson	M. A. Munchrath
1979	San Antonio	E. C. Roy, Jr.	F. W. Harrison, Jr.	T. J. Wintermute	W. R. Payne	Wilson Humphrey
1980	Lafayette	F. W. Harrison, Jr.	P. M. Strunk	C. G. Beckwith	C. A. Baird	J. O. Lewis
1981	Corpus Christi	P. M. Strunk	J. J. Amoroso	S. A. Horton	P. D. Cate	J. C. Marble
1982	Houston	J. J. Amoroso	S. C. Childress	C. S. Cook	E. W. Saye	J. M. Forgetson, Jr.
1983	Jackson	S. C. Childress	J. P. Palmer	Rizer Everett	D. C. Ratcliff	L. E. Garner
1984	Shreveport	J. T. Palmer	E. G. Wermund	B. D. David	F. E. Lindfors-Keams	H. L. Roland
1985	Austin	E. G. Wermund	D. E. Pope			
1986	Baton Rouge	D. E. Pope	R. H. Sams			

GULF COAST ASSOCIATION OF GEOLOGICAL SOCIETIES
Honorary Members

R. R. Berg (1985)
D. R. Boyd (1982)
J. Braunstein (1982)
W. L. Fisher (1986)
M. T. Halbouty (1982)
F. W. Harrison, Jr. (1982)

H. N. Hickey (1982)
R. J. LeBlanc, Sr. (1984)
S. J. Lysinger (1983)
J. O. Lewis (1983)
L. H. Meltzer (1982)

W. R. Paine (1984)
E. C. Roy, Jr. (1983)
C. L. Sartor (1986)
F. L. Smith, Jr. (1983)
P. M. Strunk (1983)
M. O. Turner (1984)

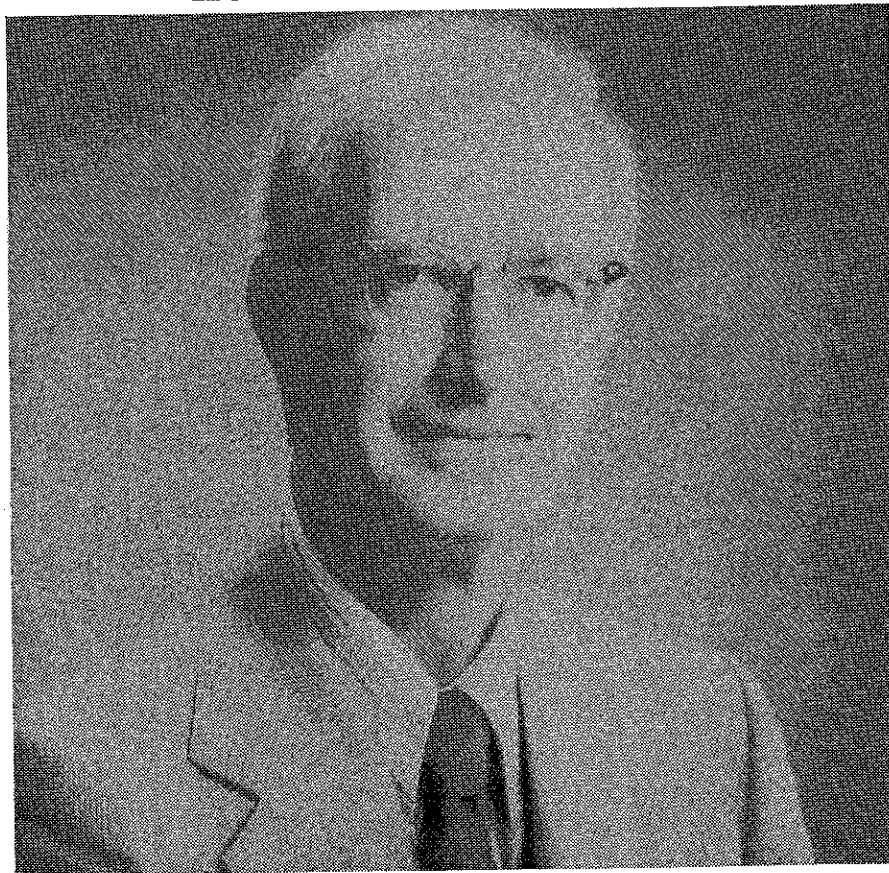
Distinguished Service Awards

1982: R. E. Boyer
1983: none awarded
1984: A. T. Green, Jr.
1985: C. E. Harrison
1986: none awarded

P. B. Souders
DeWitt C. Van Siclen
R. W. Stephens, Jr.

B. C. Tucker

HONORARY MEMBERSHIP



CHARLES LANE SARTOR

With pride, the Gulf Coast Association of Geological Societies has awarded Honorary Membership to Charles Lane Sartor for his distinguished contributions to the profession of Geology and to the Petroleum Industry.

Lane was born December 3, 1921 in Shreveport, Louisiana, and has remained a resident of that city since birth. He attended Washington and Lee University, receiving a B.A. degree in geology in 1942. He enlisted immediately in the Army Air Corps and served overseas in India and in China with the 14th Air Force from December 1943 to January 1946.

Lane was employed by Barnsdall Oil Company in January 1947 as land and geological scout and later as subsurface geologist. In March 1950 he became District Geologist for Pan Am Southern Corporation. Pan Am merged with Stanolind in August 1954 and he joined Wheless Drilling Company in an exploration program in the Ark-La-Tex area. Lane is presently Vice President of Wheless Industries, Inc., and Tensas Delta Land Company and serves as exploration manager and member of the Board of Directors of both companies.

A member of the American Association of Petroleum Geologists since 1949, he is also a Certified Petroleum Geologist. He has served as District Representative for the AAPG twice and also served as a member of the Business Committee and the Membership Committee of the Association. He is a member of the American Institute of Professional Geologists.

Lane has been a member of the Shreveport Geological Society since 1947 and has served as Secretary-Treasurer, Vice President and on numerous committees. He has presented three papers before the Society; the Simsboro Field, the Caddo-Pine Island Field, and the East Dykesville Field.

He has been an active member of the GCAGS, serving as Program Chairman for the 1967 convention in Shreveport. During that meeting he arranged for the loan and display of samples from the first Lunar Expedition. He served the GCAGS as Vice President in 1975, President in 1976, and on the Executive Committee in 1977. While President of GCAGS he instituted a student paper awards program which eventually grew into the GCAGS Scholarship Program. He served on the first GCAGS Investment Committee, having urged that the Executive Committee consolidate all surplus funds at a single site. He co-authored and presented a paper, "The Petroleum Geology of the Smackover 'C' Sand of the East Dykesville Field" which received Third Place award at the GCAGS 1984 Convention.

Lane is a lifelong member of Noel Memorial United Methodist Church, where he has served on many committees and boards. He teaches the Men's Bible Class as well as leading a weekly Bible study group.

Lane has also served his community as President of the United Way, President of the Shreveport Association for the Blind, and is presently President of the Board of Control of the Shreve Memorial Library. He is a Trustee of the William C. Woolf Foundation.

Lane's forty years in geology and exploration have been concentrated in the Ark-La-Tex area. His experience has varied from scout to vice president and exploration manager, and thus he has "seen it all". He epitomizes the definition of a gentleman. His approach to his many professional, religious, and civic endeavors in one which sets a pattern for all. His private, public, and professional ethics are of the highest order. To be honored by the Gulf Coast Association of Geological Societies is an indication of the esteem held for Lane by his friends and colleagues.

Charles Ellis Brown

HONORARY MEMBERSHIP



WILLIAM L. FISHER

William L. Fisher was born in 1932 in Marion, Illinois and received his B.S. degree in geology from Southern Illinois University in 1954. Bill then chose the University of Kansas to continue his geological education and holds both M.A. and Ph.D. degrees from that fine university. In 1960, Bill came to Texas for his first professional position as a research geologist with the Bureau of Economic Geology at The University of Texas in Austin, Texas. The major contributions to both Texas and to his profession made by this outstanding geologist and administrator in the next 26 years is indeed remarkable.

Bill quickly built an outstanding record as a top-notch research scientist and as a highly productive individual. The high quality of his work, combined with the original and creative concepts he was developing, earned him the respect and admiration of his fellow geologists. Bill, with J. H. McGovern as co-author, chose the GCAGS TRANSACTIONS in 1967 to first present the new concepts of sedimentary depositional systems in the Gulf Coast that are now so widely accepted.

In 1970, Bill was appointed Director of the Bureau of Economic Geology and, as such, became the State Geologist of Texas. Under Bill's significant managerial skills, the Bureau increased rapidly in both the volume and the variety of its research and publications.

In 1975, Bill was granted a leave of absence to accept a position in Washington as the Deputy Assistant Secretary of Energy for the Department of the Interior. In less than a year, he had been elevated to Assistant Secretary for Minerals and Energy. Bill's appointment to this position by President Ford and his quick Senate confirmation can only lead one to speculate that word of his ability had spread from Texas and the Gulf Coast all the way to the Potomac.

Bill felt that two years in Washington were long enough and he returned to the University in 1977. In 1984, President Peter T. Flawn, who probably knows Bill's ability as well as anyone, appointed him Professor of Petroleum Geology of the Morgan J. Davis Centennial and at the same time named him Chairman of the Department of Geological Sciences. Bill also became the Director of The Geology Foundation of The University of Texas. Bill's term as President of AAPG from 1985-86 was marked by sharp attention to the problems faced by our profession in a time of unprecedented oil price decreases and increasingly critical unemployment. Geologists have been most fortunate to have Bill's intellect, disarming charm, and administrative expertise available as President of AAPG during the critical events of this past year.

Bill's professional affiliations and awards are too numerous to list. As President of the Austin Geological Society in 1973-74, Bill was instrumental in that group's decision to seek membership in the GCAGS. He has authored or co-authored 8 books or manuals, and published over 120 geological reports, bulletins and articles, with the majority being distinctly Gulf Coast oriented. He has given over 150 public lectures and addresses with a different topic—many of them as the principal speaker or keynoter.

Bill's entire career has been dedicated to the advancement of the geological sciences and to the betterment of the geological profession. His energy knows no bounds and his only limitations are the high level of quality he demands of himself in his work. We are all the recipients of the exceptional productivity of this amazing individual.

Don R. Boyd

**GULF COAST SECTION
SOCIETY OF ECONOMIC PALEONTOLOGISTS
AND MINERALOGISTS
1985-1986 EXECUTIVE COUNCIL**

PRESIDENT

Susan J. Conger Morris
Morris Geological Enterprises,
11422 Hornbrook Drive
Houston, Texas 77099

PRESIDENT-ELECT

Charles L. McNulty
Dept. of Geology,
Univ. of Texas at Arlington
UTA Box 19049
Arlington, Texas 76019

VICE PRESIDENT

Arthur S. Waterman
Paleo-Data, Inc.,
6619 Fleur De Lis Drive
New Orleans, Louisiana 70124-1499

SECRETARY

John G. McPherson
Mobil Res. & Dev. Corp.,
P.O. Box 819047
Dallas, Texas 75381

TREASURER

Richard E. Constans
Chevron USA, Inc.,
935 Gravier Street
New Orleans, Louisiana 70112

PAST PRESIDENT

Ernest A. Mancini
Geological Survey of Alabama,
P.O. Drawer O
University, Alabama 35486

1986 ANNUAL CONVENTION COMMITTEE

VICE CHAIRMAN

Elisabeth C. Kosters
Louisiana Geol. Survey,
University Station, Box G
Baton Rouge, Louisiana 70893

PROGRAM CO-CHAIRMEN

James M. Coleman
Coastal Studies Institute,
Louisiana State Univ.
Baton Rouge, Louisiana 70803

Clyde H. Moore
Basin Research Institute,
Louisiana State Univ.
Baton Rouge, Louisiana 70803-4101

EDITOR

Thomas F. Moslow
Louisiana Geological Survey,
University Station, Box G
Baton Rouge, Louisiana 70893

**REPORT OF THE PRESIDENT
GULF COAST SECTION
SOCIETY OF ECONOMIC PALEONTOLOGISTS AND MINERALOGISTS
1986**



Susan J. Conger Morris

The success of the Annual Meeting of the GCS/SEPM and GCAGS depends upon the efforts of the individuals. This year the GCS/SEPM has been supported by the hard-working efforts of Elisabeth C. Kusters, Vice Chairman, James M. Coleman and Clyde H. Moore, Program Co-Chairmen, Thomas F. Moslow, Editor, and Michael J. Nault and Stephen Truax, Awards and Judging Co-Chairmen. These people have spent considerable time selecting abstracts for the sessions on sedimentation and stratigraphy and putting together two fine symposia. I also acknowledge the close working relationship that we have been fortunate to have with Dave Pope, President of the GCAGS.

The 1985 Annual Field Trip was to be held in September and led by Rena Bonem, Robert Grayson, and O. T. Hayward of Baylor University. The trip to the Platform Comanchean section of Central Texas has been postponed until 1987 and will probably be run as one of the field trips in conjunction with the annual convention in San Antonio next October.

The Sixth Annual Research Conference was held December 1-4 in Austin, Texas and was attended by about 130 participants and speakers. The topic of the conference was "Timing of Siliciclastic Diagenesis: Relationship to Hydrocarbon Migration." The Program Advisory Committee consisted of the Program Co-Chairmen Ray E. Ferrell and Earle F. McBride and the committee, Harry Dahl, Stephen Sears, Lynton S. Land, Ron K. Stoessell, and Alan F. Thomson. Although registration was lower than previous conferences, the participants were pleased with the program and format of the conference.

The Seventh Annual Research Conference on "Shelf Sedimentation, Shelf Sequences and Related Hydrocarbon Accumulation" is to be held December 7-10 in Corpus Christi, Texas. The Program Advisory Committee consists of Robert A. Morton, Co-Chairman, Dag Nummedal, Co-Chairman, John H. Barwis, Ron D. Kreisa, John R. Suter, and Donald J. P. Swift. A quality program of speakers and core and poster displays is in store for those who attend.

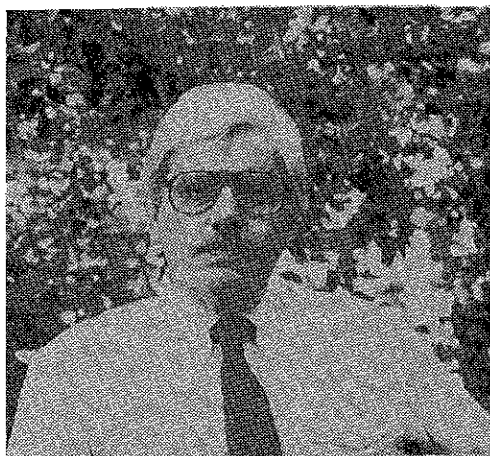
The GCS/SEPM Foundation has prospered under the guidance of Bob F. Perkins, Executive Director, and Trustees Doris M. Curtis (1985 Chairman), Edward B. Picou, Jr. (Chairman 1986), William P. S. Ventress, and Don G. Bebout. Tax-exempt contributions aid the Foundation and Section in holding the annual research conferences and publishing proceedings and guidebooks. New publications include "Habitat of Oil and Gas in the Gulf Coast, Proceedings of the Fourth Annual Research Conference," "Lower Cretaceous Depositional Environments—Shoreline to Shelf: A Core Workshop," and "Timing of Siliciclastic Diagenesis: Relationship to Hydrocarbon Migration, Program and Abstracts." The Special Projects Committee, chaired by Gene Martin, has worked hard this past year to keep contributions coming in. The Grant Review Board with Chairman Emily Stoudt nominated 9 scholarship awards of \$1000 each for doctoral students and 19 scholarship awards of \$500 each for masters students. These nominations were approved by the Trustees and Executive Director. The Section and Foundation are working toward a publication of the benthonic markers of the Gulf Coast. This publication will be in the form of a loose-leaf notebook containing plates and industry synonymy. Although a great deal of uncertainty remains in the petroleum industry at this time, the Gulf Coast Section continues to strongly support scientific research.

The Section and Foundation have selected a permanent address: Gulf Coast Section or Foundation/SEPM, 1416 Creekford Drive, Arlington, Texas 76012.

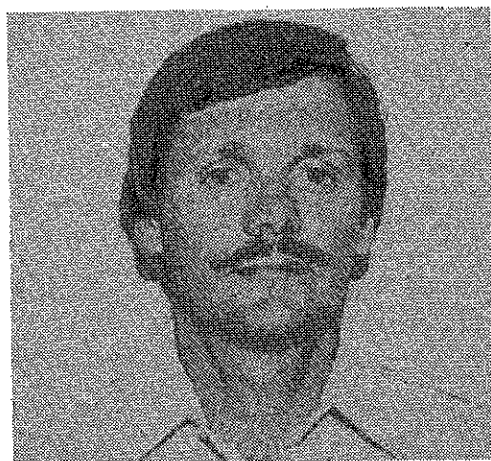
This meeting marks the end of my term as President of the Gulf Coast Section of SEPM. The experience has been rewarding and I have had the opportunity to work with an enthusiastic group of individuals—Charlie McNulty, President-Elect, Art Waterman, Vice President, John McPherson, Secretary, Dick Constans, Treasurer, and Ernie Mancini, Past President. I also acknowledge the business representatives for the time they take to keep the section informed. This society, as do all the other societies, only function through the support of the individuals who volunteer their time. I thank you for your support and for allowing me this opportunity to be so actively involved in the society.

Susan J. Conger Morris
President, GCS/SEPM

**GULF COAST SECTION
SOCIETY OF ECONOMIC PALEONTOLOGISTS AND MINERALOGISTS
BEST PAPER AWARDS, THIRTY-FIFTH ANNUAL MEETING
AUSTIN, TEXAS**



Paul A. Thayer



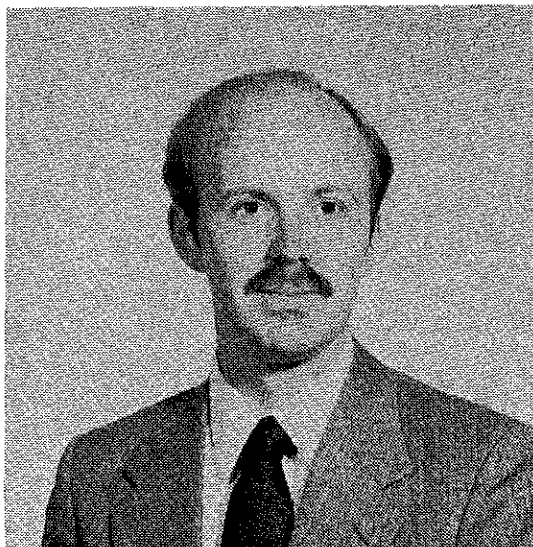
Harry H. Roberts

THE GCS/SEPM BEST PUBLISHED PAPER AWARD was presented to Paul A. Thayer and Harry H. Roberts for the paper "Petrology and Sedimentology of Mississippi Fan Cores, DSDP Leg 96.

Paul A. Thayer is Senior Geological Advisor with Mobil Oil Exploration & Producing Inc., New Orleans, specializing in clastic sedimentology and petrology. Prior to joining Mobil he worked for Amoco, BP, and Chevron in both exploration and production. He was Professor of Geology and Marine Science at University of North Carolina at Wilmington from 1970-1981. Thayer was educated at Rutgers University (B.A. 1961), Ohio State University (Graduate Study, 1961-62) and University of North Carolina (Ph.D. 1967). He is a Fellow of the GSA and a member of AAAS, AAPG, SEPM, International Association of Sedimentologists, New Orleans Geological Society, and Sigma Xi; and is listed in American Men and Women of Science, Who's Who in America and Who's Who in the World. He is author or co-author of more than 100 technical papers and abstracts on stratigraphy, petrology, marine geology and exploration geochemistry. Thayer authored papers that received third place in the Best Paper Awards at the Twenty-Second and Twenty-Third Annual Meetings.

Harry H. Roberts received his B.S. degree in Physics (1963) from Marshall University in Huntington, West Virginia, and M.S. (1966) and Ph.D. (1969) degrees in Geology from Louisiana State University. He joined the Coastal Studies Institute in 1968 and advanced to the rank of Professor in 1978. Since 1968, he has been designing and conducting field-oriented research projects in carbonate and terrigenous settings. These studies relate to a wide variety of coastal and shelf problems, including physical processes, sedimentation, and geomorphology. Field investigations have been conducted domestically and along a variety of foreign coasts, including Grand Cayman, Barbados, Nicaragua, Brazil, Oman, Egypt, St. Croix, and Indonesia. In addition, he has been active as a consultant to the oil industry on problems of geological hazards, sedimentation, and high-resolution geophysical data interpretation. He has worked for engineering firms and consulting agencies on problems of coastal sedimentation and sediment stability. Commonly, in conjunction with other members of the Coastal Studies Institute, he has taught applied geology short courses on deltas and carbonate environments. Roberts has authored or co-authored more than eighty professional papers and technical reports on basic and applied coastal geoscience and has presented invited lectures domestically and in foreign countries.

**GULF COAST SECTION SEPM
EXCELLENCE OF PRESENTATION AWARD**



Gordon W. Fielder

THE GCS/SEPM EXCELLENCE OF PRESENTATION AWARD was presented to Gordon W. Fielder for his presentation of the paper "Depositional Influences in Sandstone Diagenesis of the Lower Cretaceous Hosston Formation, Marion and Walthall Counties, Mississippi," by Gordon W. Fielder, Mark P. DiStefano, and Jay N. Shearer.

Gordon W. Fielder is employed by Conoco Inc. as a research geologist in Ponca City, Oklahoma. A native of Michigan, he received his B.S. in geology from the University of Michigan in 1978 and received an M.S. in geology from the University of Wisconsin/Madison in 1985.

Gordon has been employed by Conoco since 1981, and first worked in Gulf Coast exploration and operations geology from Houston. In 1984, he was assigned to the Exploration Research and Development Division of Conoco. His research and publications focus on sandstone diagenesis and deposition, eolian sedimentary processes, and seismic interpretation and modeling. He maintains a strong interest in Mesozoic geology of the Gulf Coast area.

Gordon is a member of the Society of Economic Paleontologists and Mineralogists, the American Association of Petroleum Geologists and the Houston Geological Society.

GULF COAST SECTION SEPM BEST PAPER AWARDS

Year	Best Published Paper	Excellence of Presentation
1985	Paul A. Thayer Harry H. Roberts	Gordon W. Fielder
1984	M. J. Ulrich J. R. Kyle P. E. Price	M. Kontrovitz
1983	E. C. Kusters A. Bailey	D. B. Prior
1982	J. Mazzullo	C. D. Winker
1981†	T. A. Daws A. V. Applegate J. C. Palácas	C. R. Handford

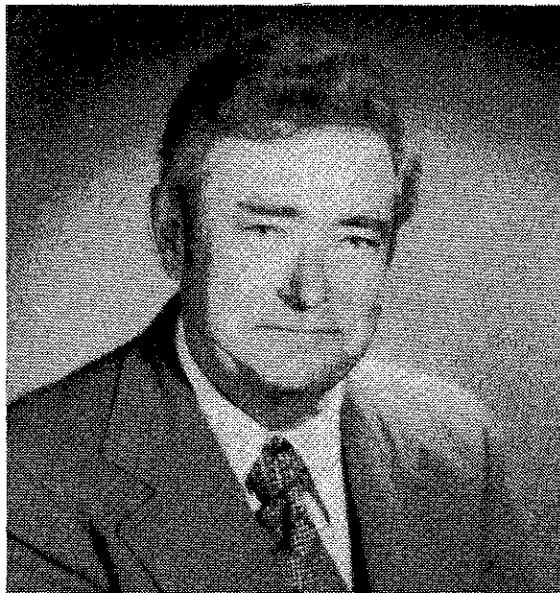
Before 1981, awards were awarded for first, second and third place.

Year	First Place	Second Place	Third Place
1980	A. W. Cleaves	I. L. van Heerden H. H. Roberts	T. A. Hansen
1979	L. C. Price J. L. Clayton L. L. Rumen	C. W. Poag R. C. Tresslar	R. E. Casey L. W. Gust R. A. Reynolds D. H. Williams A. Leavesley T. Duis J. M. Spaw
1978	A. Thomson	C. W. Poag	J. A. Schiebout
1977	C. D. Winker J. D. Howard	W. C. Isphording	R. M. Looney V. R. Baker
1976	C. J. Stuart C. A. Caughney	R. R. Berg R. R. Powell	C. W. Poag P. C. Valentine
1975	J. L. Wilson	K. F. Wantland M. E. York	W. C. Isphording
1974	G. M. Friedman	W. F. Tanner C. R. Berquist	R. J. Moiola D. Weiser A. B. Spencer
1973	W. F. Tanner	R. J. Moiola A. B. Spencer	P. A. Thayer (tie) W. J. Cleary E. O'Donnell (tie) A. P. Wright
1972	W. F. Tanner	A. E. Weidie J. L. Wollenben E. F. McBride	P. A. Thayer D. A. Textoris
1971	R. W. Maxwell, Jr.	C. W. Poag	E. A. Shinn
1970	W. W. Hay S. W. Wise, Jr. R. D. Stieglitz	J. B. Dunlap, Jr.	W. L. Fisher C. V. Proctor, Jr. W. E. Galloway J. S. Nagle

† - and Best Poster Award to E. A. Mancini

GULF COAST SECTION SEPM

HONORARY MEMBERSHIP



Claude M. Quigley, Jr.

Claude M. Quigley, Jr. was born in St. Joseph, Missouri on August 26, 1916. He attended the University of Missouri where he received his A.B. degree in Geology in 1941 and his M.A. degree in Geology in 1942.

Claude served in the U.S. Army for three years during World War II, including two years in the Mediterranean Area. He was a photogrammetrist with the Army Engineers and taught historical geology at an Army school in Florence, Italy.

He began his professional career in paleontology with the Atlantic Refining Company in 1942 and remained with them until 1947, when he accepted a position with Standard Oil Company of Texas in Houston. Claude advanced to Division Paleontologist, Senior Paleontologist and Staff Paleontologist before being transferred to Chevron Oil Company in New Orleans in 1972, where he supervised Paleontologic Operations until 1976. He retired in 1977 and returned to Texas, where he enjoys golf and paleontologic consulting on a part-time basis.

Claude has always been an active and dedicated member of the professional organizations to which he belongs. He is a member of AAPG, SEPM, GSA (fellow), Gulf Coast Section—SEPM, Paleontological Society, Swiss Geological Society, Cushman Foundation for Foraminiferal Research (fellow) and the Houston Geological Society.

He is one of the founders of the Gulf Coast Section—SEPM and served as editor in 1954 and 1956, Vice-President (1958-1959), President (1960-1961), and as a Trustee of the foundation (1981-1984).

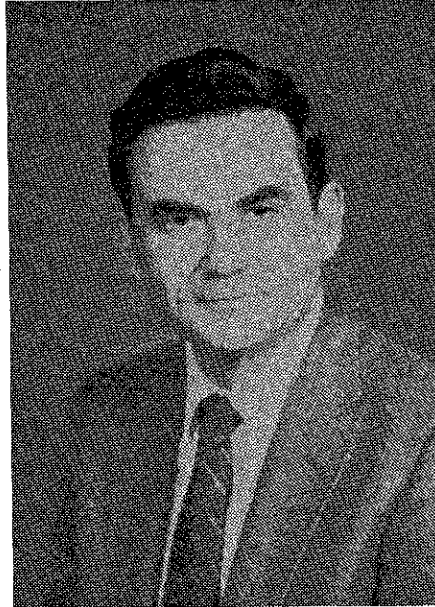
Claude did not limit his participation and service to the Gulf Coast Section—SEPM, as exemplified by his appointment as national Vice-Chairman of SEPM in 1963.

This honorary Membership is in recognition of his dedication and service to the Gulf Coast Section.

John E. Kilgore

GULF COAST SECTION SEPM

HONORARY MEMBERSHIP



William P. S. Ventress

Bill Ventress was born in Jackson, Mississippi on September 7, 1932. He received a B.S. in geology—and a Phi Beta Kappa key—from the University of Oklahoma in 1955 and, after a stint as a naval officer on the heavy cruiser USS Toledo, an M.S. from the same school in 1958.

Upon graduation, Bill accepted a position with Chevron USA (then California Company) as a paleontologist based in New Orleans, where he became expert in the field of Tertiary and Mesozoic foraminifera of southeast Louisiana and adjacent offshore areas. From 1961 until 1970 he served as Calco Division Paleontologist. In 1970, the desert called and Bill transferred to ARAMCO, working in Dhahran, Saudi Arabia, as Paleontology Supervisor, specializing in Mesozoic foraminifera and ostracodes.

Shortly after returning to New Orleans, in 1974, Bill was appointed Biostratigraphic Supervisor for Eastern Region, Chevron USA, a position he still holds. In 1980 he became Paleontologic Coordinator for Chevron Corporation.

Bill has long been active in the AAPG, SEPM, AASP, and Cushman Foundation. He is currently vice-president of the Board of Trustees of the Paleontological Research Institution. He has held many executive posts with the Gulf Coast Section of the SEPM and is a Trustee of the SEPM Foundation. He served as editor of the GCS-SEPM Foundation publication "Jurassic of the Gulf Region" and has co-authored many papers on biostratigraphy and paleocology.

Although he has dedicated himself to a profession where the subject matter lies (to say the least) in the past, Bill has never allowed his outlook to become "fossilized." His firm commitment to innovative concepts, combined with a sense of humor, a deep interest in the ideas of others, and great leadership abilities, make knowing and working with him a privilege for us all.

This Honorary membership is in recognition of his dedication and service to the Gulf Coast Section.

Barry Kohl

GULF COAST SECTION — SEPM

HONORARY MEMBERS

Ester Applin (1964)
 Alva C. Ellisore (1964)
 Marcus A. Hanna (1964)
 Henry V. Howe (1964)
 Hedwig T. Kniker (1964)
 Winnie McGamery (1964)
 John R. Sandidge (1964)
 J.B. Garrett, Jr. (1965)
 E.H. Rainwater (1966)
 Henryk Bronislaw Stenzel (1971)
 Jules Braunstein (1973)
 Grover E. Murray (1973)

Harold V. Anderson (1975)
 Lyman D. Toulmin (1975)
 Doris M. Curtis (1977)
 Stuart A. Levinson (1978)
 Fred L. Smith, Jr. (1978)
 Charles W. Stuckey (1978)
 William R. Paine (1980)
 Frank E. Lozo, Jr. (1981)
 Gene B. Martin (1984)
 Bob F. Perkins (1984)
 Edward B. Picou, Jr. (1984)
 Claude M. Quigley, Jr. (1986)
 William P. S. Ventress (1986)

GULF COAST SECTION — SEPM

PAST OFFICERS

	PRESIDENT	VICE-PRESIDENT	SECRETARY	TREASURER
1953-1954	Stuart A. Levinson	Grover E. Murray	William H. Akers	Frank V. Stevensen
1954-1955	Charles W. Stuckey, Jr.	E.H. Rainwater	William H. Akers	Fred L. Smith, Jr.
1955-1956	E.H. Rainwater	Frank S. Westmoreland	Hugh A. Bernard	Eleanor T. Caldwell
1956-1957	Lloyd M. Pyeatt	J.O. Colle	H. Dillingham, Jr.	Eleanor T. Caldwell
1957-1958	J.O. Colle	Fred L. Smith, Jr.	Harold V. Andersen	William G. Parker
1958-1959	Marcus A. Hanna	Claude M. Quigley	Fred E. Smith	Bernard L. Hill, Jr.
1959-1960	David E. Pope	A.D. Ellis, Jr.	Gordon C. Munsey	H.A. Chun
1960-1961	Claude M. Quigley	Harold V. Andersen	E. Ann Butler	Edward Marks
1961-1962	Harold V. Andersen	Theodore D. Cook	Benjamin J. Petrusek	Albert D. Warren
1962-1963	Albert D. Warren	Ernest H. Horton	Blair S. Parrott	Henry H. Phillips
1963-1964	Lyman D. Toulmin	E. Ann Butler	Charles C. Albers	John E. Kilgore
1964-1965	Howard L. Tipsword	Benjamin J. Petrusek	D. Jeter Smith	Emmett R. Adams
1965-1966	John B. Dunlap, Jr.	John J.W. Rogers	M. Ray Bane	Charles B. Morris
1966-1967	Hubert C. Skinner	Richard P. Zingula	Gene Ross Kellough	Gene B. Martin
1967-1968	Benjamin J. Petrusek	Dan McGregor	Garrett Briggs	Herbert A. Elliott, Jr.
1968-1969	William A. Atlee	Edgar B. O'Quinn	James W. Fowler	William E. Steinkraus
1969-1970	Fred L. Smith, Jr.	Kenneth L. Loep	Robert K. Sylvester	C. Wylie Poag, Jr.
1970-1971	Jules Braunstein	Douglas E. Jones	Walter H. Trenchard	Robert N. Davids
1971-1972	William W. Hay	William E. Steinkraus	Karl J. Koenig	Gerald R. Stude
1972-1973	C. Wylie Poag, Jr.	Emmett R. Adams	Gerald R. Stude	Joan B. Strough
1973-1974	Edward B. Picou, Jr.	Walter H. Trenchard	Lawrence C. Menconi	J. Loyd Tuttle, Jr.
1974-1975	Emmett R. Adams	Clifton A. Couture	Herbert A. Elliott, Jr.	Doris M. Curtis
1975-1976	James L. Lamb	Lawrence C. Menconi	William S. Grubb	John L. Carney
1976-1977	Clifton A. Couture	Eleanor T. Caldwell	Sherwood W. Wise, Jr.	Joseph E. Boudreaux
1977-1978	Gerald R. Strude	William P.S. Ventress	Gary R. Roberson	George C. Esker, III
1978-1979	Willard P. Leutze	Bob F. Perkins	Walter P. Kessinger	Kenneth A. Hodgkinson
1979-1980	Gene B. Martin	John L. Carney	Mary Ann Rafle	Arthur S. Waterman
1980-1981	Bob F. Perkins	Don G. Bebout	Sheila C. Barnette	Ted Karmen
1981-1982	William P.S. Ventress	Kenneth A. Hodgkinson	Brian J. O'Neill	Kurt Geitzenauer
1982-1983	John L. Carney	Ernest A. Mancini	Susan J. Conger Morris	Kevin C. Kilmartin
1983-1984	Don G. Bebout	Michael J. Nault	Susan J. Conger Morris	Nelson B. Yoder
1984-1985	Ernest A. Mancini	J.M. Crosbie	John G. McPherson	John B. Anderson
1985-1986	Susan J. Conger Morris	Arthur S. Waterman	John G. McPherson	Richard E. Constans

BY-LAWS OF GULF COAST SECTION OF THE SOCIETY OF ECONOMIC PALEONTOLOGISTS AND MINERALOGISTS

ARTICLE 1.—OBJECT

- 1.01 The object of the Gulf Coast Section of the Society of Economic Paleontologists and Mineralogists is to promote the science of stratigraphy in the Gulf Coast states through research in paleontology and sedimentary petrology, especially as it relates to petroleum geology. The Corporation, herein referred to as the "Section," will be closely associated with the Gulf Coast Association of Geological Societies and will cooperate with it and with the local geological societies of which it is composed for the furtherance of mutual objectives.

ARTICLE 2.—MEMBERS

- 2.01 The Section shall have members, associate members, charter members, and honorary members.
- 2.02 Members shall be persons engaged in paleontologic, petrographic or stratigraphic studies that have application to the geology of petroleum, who are members or associate members of the Society of Economic Paleontologists and Mineralogists and who work or reside in the Gulf Coast province of the states of Texas, Louisiana, Mississippi, Alabama, Georgia or Florida, or whose interest or work is principally within these states. Membership, once obtained, shall not be dependent upon continued residence in the aforementioned states.
- 2.03 Associate members shall be persons engaged in paleontologic, petrographic or stratigraphic studies that have application to the geology of petroleum, who work or reside in the Gulf Coast province of the above mentioned states, and who are not members or associate members of the Society of Economic Paleontologists and Mineralogists. Associates shall enjoy all the privileges of membership, save that they shall not hold office. Election to membership in the Society of Economic Paleontologists and Mineralogists will automatically advance associates to members.
- 2.04 Charter members are those whose applications for membership were received before the first nomination of officers. They shall enjoy all the privileges of members and, hereinafter, are included in all references to "members."
- 2.05 The Council may elect as honorary members persons who have contributed distinguished service to the science of stratigraphy, paleontology or sedimentary petrology, especially as they relate to petroleum geology in the Gulf Coast. Honorary members shall not be required to pay dues.
- 2.06 Each candidate for membership shall submit to the Secretary an application on a form authorized by the Council for this purpose.
- 2.07 New members and associates enrolled after September 15 shall be considered as having paid their dues for the next calendar year.

ARTICLE 3.—COUNCIL AND OFFICERS

- 3.01 Executive authority of the Section is vested in a board of directors known as the "Council" consisting of six members who are duly elected by the members, as follows: President, President-Elect, Secretary, Treasurer, and the most recently retired Past President.
- 3.02 The President shall discharge the usual duties of a president, as well as act as presiding officer at all meetings of the Section and Council. He shall appoint an Editor, Program Chairman, Committee Chairmen and Business Representatives.
- 3.03 The Vice-President shall assume the duties of the President in the case of the absence or disability of the latter. He shall also be Chairman of the Membership Committee and Chairman of the Employment Counseling Committee.
- 3.04 The Secretary shall keep records of the proceedings of the Section and a complete list of the membership. He shall attend to the preparation and mailing of notices, membership application blanks and other materials necessary to the business of the Section.
- 3.05 The Treasurer shall have custody of all funds of the Section. He shall keep account of the receipts and disbursements, and submit his account to the membership at the end of each year.
- 3.06 The Council shall consider all candidates for membership and pass on the qualifications of the applicants; shall have control and management of the affairs and funds of the Section; shall designate the time and place of the Annual Meeting.
- 3.07 The President and Vice-President shall not serve for more than one (1) year, except that if the Vice-President succeeds to the position of Acting President, he may be elected to a full term as President.
- 3.08 In the event that neither the President nor Vice-President is available to serve as presiding officer of the Section, the immediate Past President shall assume the President's duties.
- 3.09 The President-Elect shall serve for one (1) year as such, and in the following year he shall assume the office of President. He shall have no administrative authority except as a member of the Council. He shall acquaint himself with all the details of the office of President and generally prepare himself to serve as President. He shall be responsible for the preparation of the annual meeting for the ensuing year.
- 3.10 A vacancy occurring in the offices of Vice-President, Secretary or Treasurer shall be filled by Council appointment.
- 3.11 A vacancy occurring in the office of President-Elect shall be filled by mail ballot by the membership through a special election called by the Council.

ARTICLE 4.—MEETINGS OF MEMBERS

- 4.01 The Section shall hold at least one stated meeting each year, which shall be known as the Annual Meeting. This meeting will usually be held in conjunction with the Annual Meeting of the Gulf Coast Association of Geological Societies.
- 4.02 The program for the Annual Meeting shall be arranged by the Program Chairman in conjunction with the Chairman designated by the Gulf Coast Association of Geological Societies to arrange for its own program. In general, it will be desirable that the contributions from members of the Section be included in the main program rather than being allotted to a separate session.
- 4.03 At the time of the Annual Meeting, a Business Meeting shall be held for the transaction of Section business.

ARTICLE 5.—AMENDMENT OF BYLAWS

- 5.01 These Bylaws may be amended by a two-thirds vote of returned mail ballots received by the Secretary sixty (60) days after proposal of amendments with provision for vote is mailed to the members. Any proposed amendments must have the approval of a majority of the Council before being submitted to the members.
- 5.02 A petition containing the signatures of twenty (20) active members is considered sufficient to bring before the Council a proposed change in the Bylaws. A majority vote of the Council is also considered sufficient to initiate a proposed change.

ARTICLE 6.—DUES

- 6.01 The fiscal year of the Section shall commence on October 1 and expire of September 30 of the following year.
- 6.02 The annual dues of the members and associates of the Section shall be four dollars (\$4.00). Penalty of fifty cents (.50) shall be assessed for late payments. The fifty cents (.50) late penalty shall be waived upon payment of dues for two more years.
- 6.03 A bill for dues shall be mailed to each member and associate before January 1 of each year. Members and Associates who have not paid their annual dues by April 1 shall be dropped from the membership rolls.
- 6.04 Members and Associates dropped for non-payment of dues may apply to the Council for reinstatement and be reinstated by majority vote of the Council.
- 6.05 Members or Associates may, at their discretion, pay their annual dues in advance for periods of up to five (5) years.

ARTICLE 7.—FINANCIAL PROCEDURE

- 7.01 No officer or member shall enter into contract or disburse any of the Section's funds, without the co-signature of a member of the Council. Disbursal of a sum in excess of Five Hundred Dollars (\$500.00) must be approved by a majority of the Council.

ARTICLE 8.—ELECTIONS

- 8.01 The President shall appoint two (2) nominating committees, instructing each committee to submit nominations for President-Elect, Vice-President, Secretary, and Treasurer. These nominations shall be in the Secretary's hands before July 15. If desired, the same person may be nominated by the two committees for the offices of Secretary and Treasurer, but the nominations for President-Elect and Vice-President shall not include the names of the same person on the two slates. The nominations of the first committee to file its report will have precedence in case of overlapping nominations, and the other committee shall then be requested to change its nomination. A candidate for office must be an active member and reside in the Gulf Coast at the time of his nomination.
- 8.02 Ballots containing the nominations for officers, arranged alphabetically under each office, shall be prepared by the Secretary and mailed to each member of the Section on or before July 15. The ballots received by the Secretary before September 15 shall be counted by him. Receipt of a plurality of the votes cast for any office shall constitute election. In case of a tie vote, members of the Council shall cast one additional deciding vote.
- 8.03 Results of balloting shall be announced at the Annual Meeting, and the new officers shall enter upon duty at the adjournment of the Meeting.

ARTICLE 9.—PUBLICATIONS

- 9.01 The Section Editor, appointed by the President, shall actively solicit papers from the Section membership for presentation at the Annual Meeting. He shall cooperate with the editor of the Gulf Coast Association of Geological Societies' TRANSACTIONS volume in preparing papers delivered at the meeting for publication in this volume. He shall cooperate with the editors of the Society of Paleontologists and Mineralogists' journals by helping to arrange for publication in these periodicals of suitable papers which come to his attention.
- 9.02 Members of the Section may purchase one copy of each Section publication at a discount of 20 percent off the advertised price.

ARTICLE 10.—BUSINESS REPRESENTATIVES

- 10.01 The President shall appoint one representative from each group of members in each local geological society affiliated with the Gulf Coast Association of Geological Societies and in other localities as needed. Each representative shall have an up-to-date list of the members residing in his vicinity. He will notify these members concerning any matters of Section policy which may be relayed to him by the President and shall have the authority to convene a meeting of those members to determine their views concerning Section affairs. He will report the results of such meetings to the President of the Section. He will cooperate with the Section Editor in the soliciting of papers to be presented at the Annual Meeting and with the Chairman of the Membership Committee in recruiting new members for the Section.

ARTICLE 11.—AUDIT

1101 The President shall appoint an Auditing Committee which shall review the accounts presented by the Treasurer. The approval of the Treasurer's books by the committee shall be required before his final report will be accepted. The Treasurer shall submit a provisional report at the Annual Meeting, and his final audit shall be accomplished not later than 30 days thereafter.

The Constitution of the GCS-SEPM was originally adopted in 1954 and was amended in 1960, 1962, 1966, 1969, 1971, 1972, 1975, and 1981.

The Section was incorporated under the laws of the State of Texas in 1981, and these Bylaws were adopted at that time in place of the original Constitution and its amendments. These Bylaws embody all of the provisions of the original Constitution and its amendments.